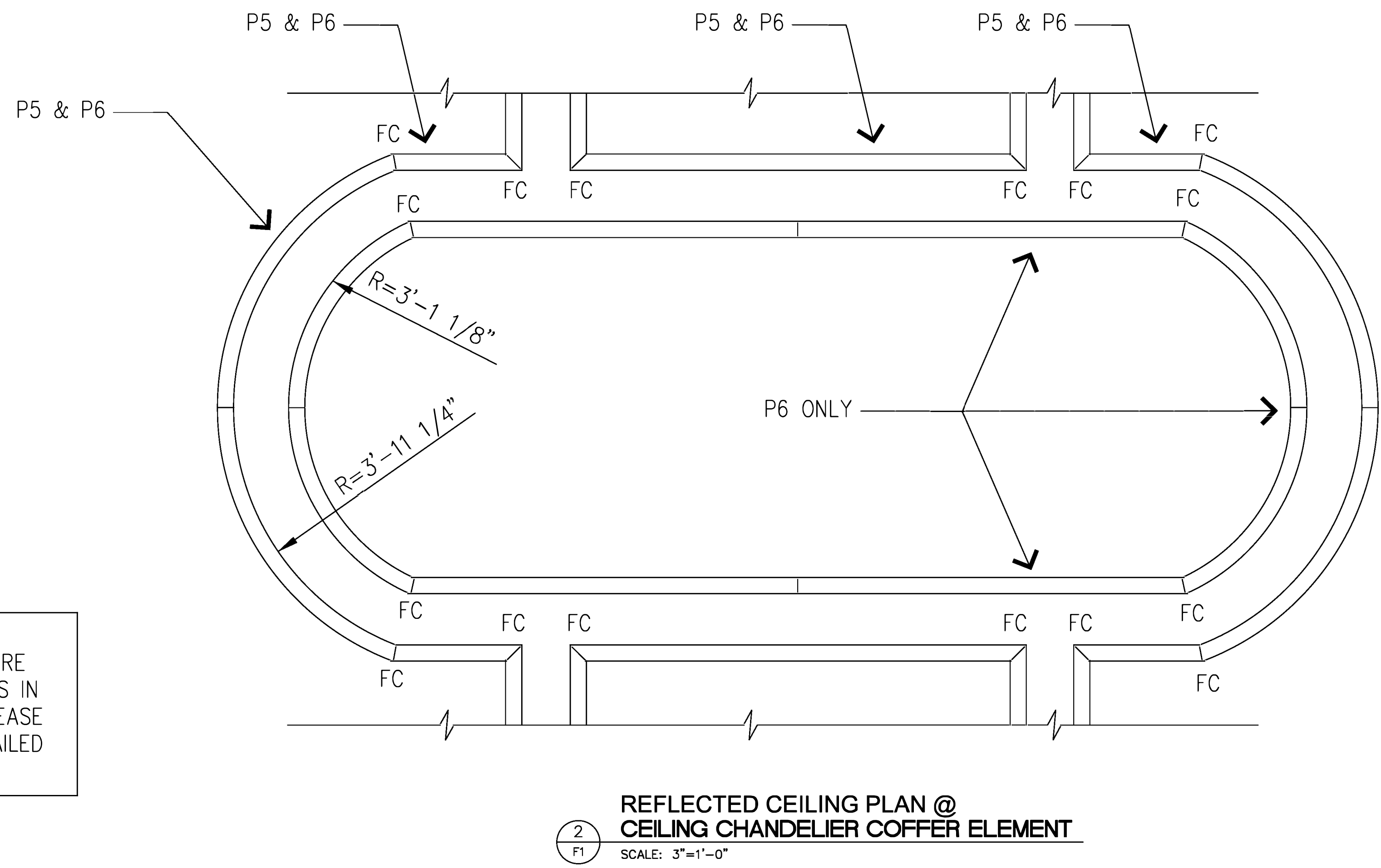
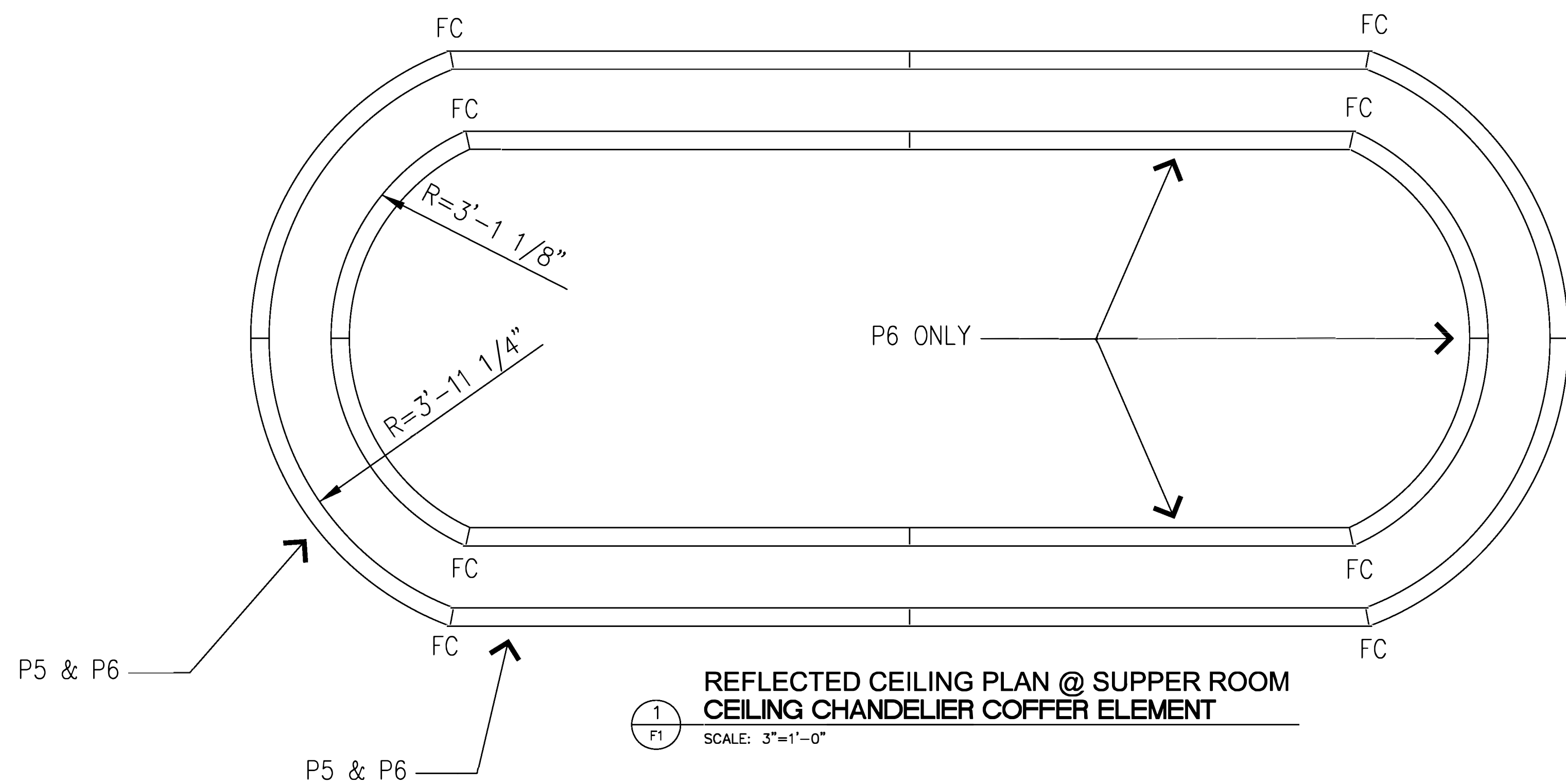


REVISION NO.	BY



NOTE:
ALL CORNERS & ALL RADIUS TO
STRAIGHT CONNECTIONS ARE TO BE
FIELD CUT

NOTE:
THE RADIUS SHOWN ON ALL P5 & P6 PARTS REQUIRE
VERIFICATION DUE TO THE SECTION AND PLAN VIEWS IN
THE ARCHITECTURAL DRAWINGS DO NOT MATCH. PLEASE
REFERENCE SHEETS P5 & P6 FOR ADDITIONAL DETAILED
DIMENSIONS.

SAN ANTONIO COUNTRY CLUB
SAN ANTONIO, TEXAS

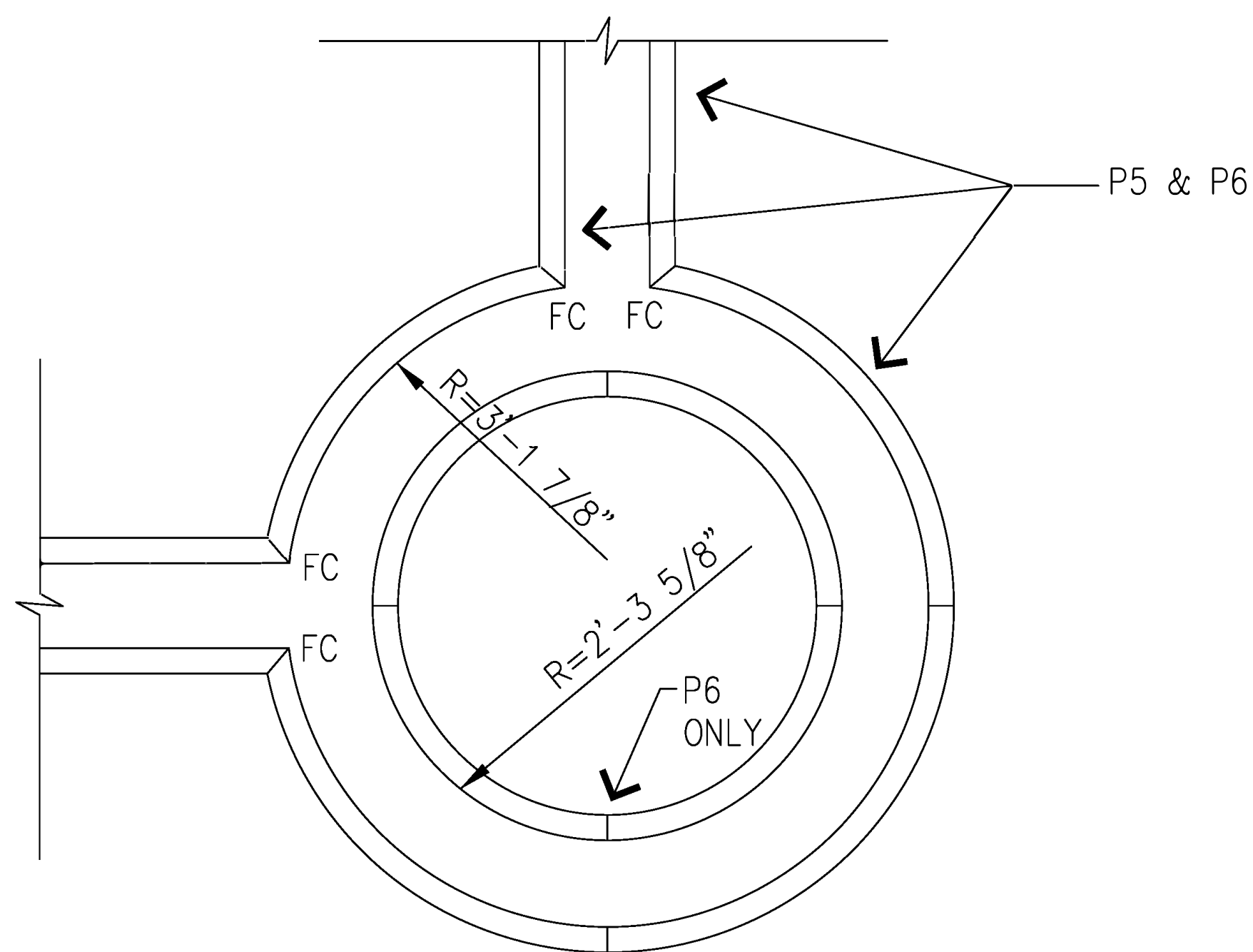
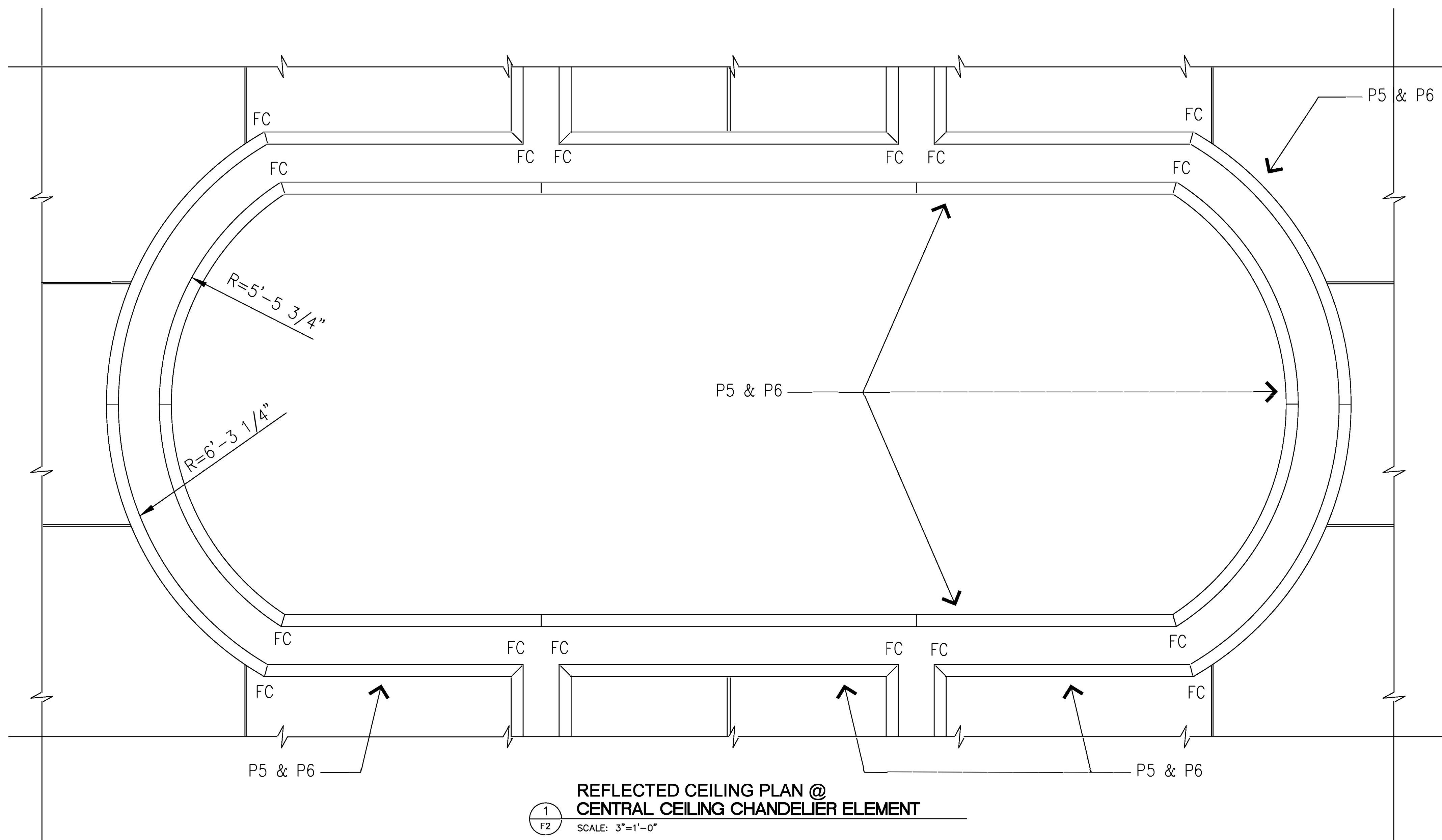
FIRST CLASS BUILDING PRODUCTS
3600 DALLAS HIGHWAY • SUITE 230-387
MARETTA, GEORGIA 30064 • USA
Phone 770.514.8141 • Fax 770.514.0731

DRAWN BY:	TAN
CHECKED BY:	M.S.
DATE:	07.02.2013
SCALE:	AS SHOWN
CAD FILE NO.:	SACC_F1.DWG

F1

DRAWING 2 OF 9

REVISION NO.	BY:



NOTE:
ALL CORNERS & ALL RADIUS TO STRAIGHT CONNECTIONS ARE TO BE FIELD CUT

NOTE:
THE RADIUS SHOWN ON ALL P5 & P6 PARTS REQUIRE VERIFICATION DUE TO THE SECTION AND PLAN VIEWS IN THE ARCHITECTURAL DRAWINGS DO NOT MATCH. PLEASE REFERENCE SHEETS P5 & P6 FOR ADDITIONAL DETAILED DIMENSIONS.

SAN ANTONIO COUNTRY CLUB
SAN ANTONIO, TEXAS

FIRST CLASS BUILDING PRODUCTS
3600 DALLAS HIGHWAY • SUITE 230-387
MARETTA, GEORGIA 30064 • USA
Phone 770.514.8141 • Fax 770.514.0731

DRAWN BY:
TAN
CHECKED BY:
M.S.
DATE:
07.02.2013
SCALE:
AS SHOWN
SACC FILE NO.
SACC F2.DWG

F2

REVISION NO.	BY

SAN ANTONIO COUNTRY CLUB
SAN ANTONIO, TEXAS

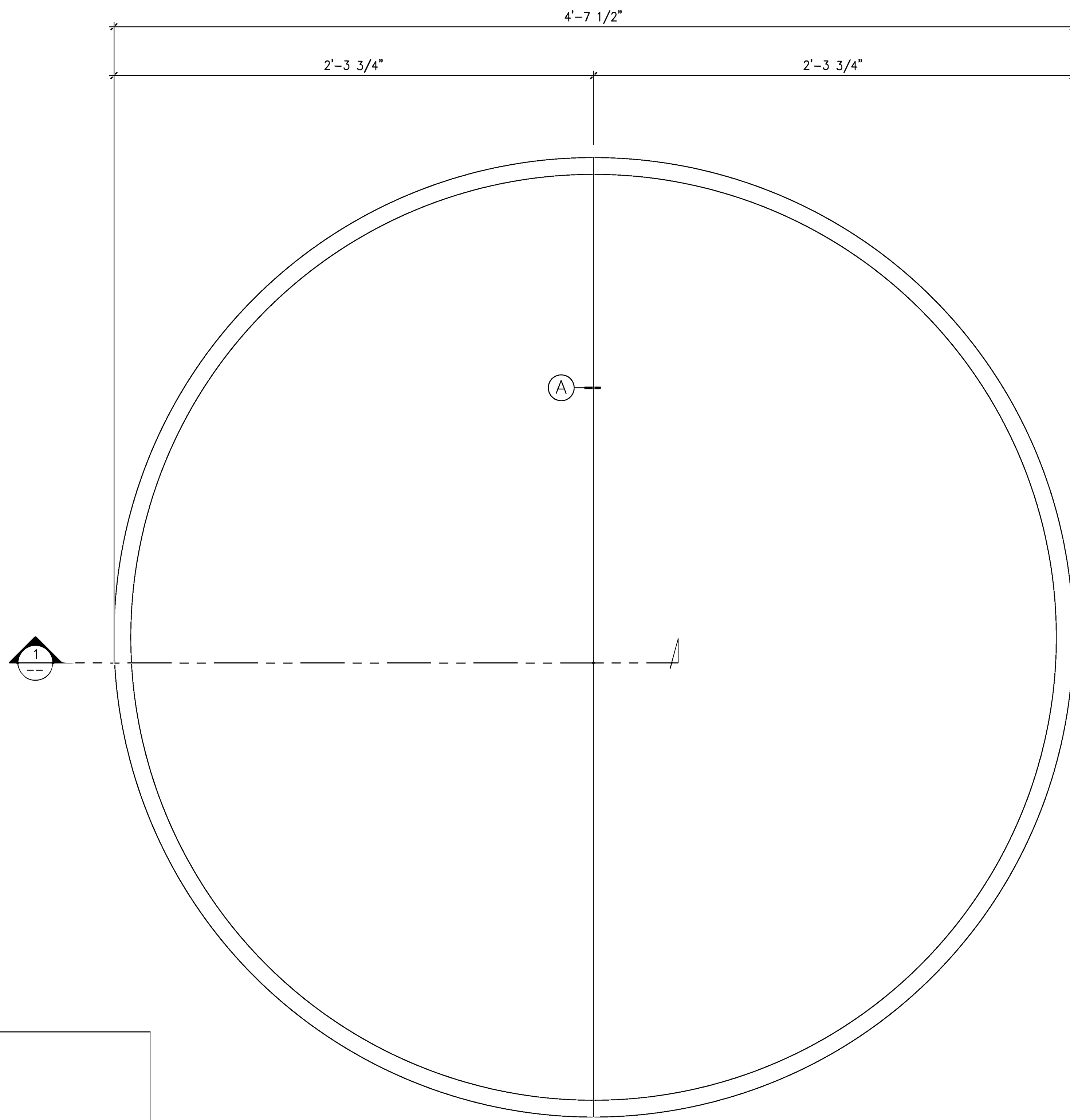
FIRST CLASS BUILDING PRODUCTS

3600 DALLAS HIGHWAY • SUITE 230-387
MARIETTA, GEORGIA 30064 • USA
Phone 770.514.8141 • Fax 770.514.0731

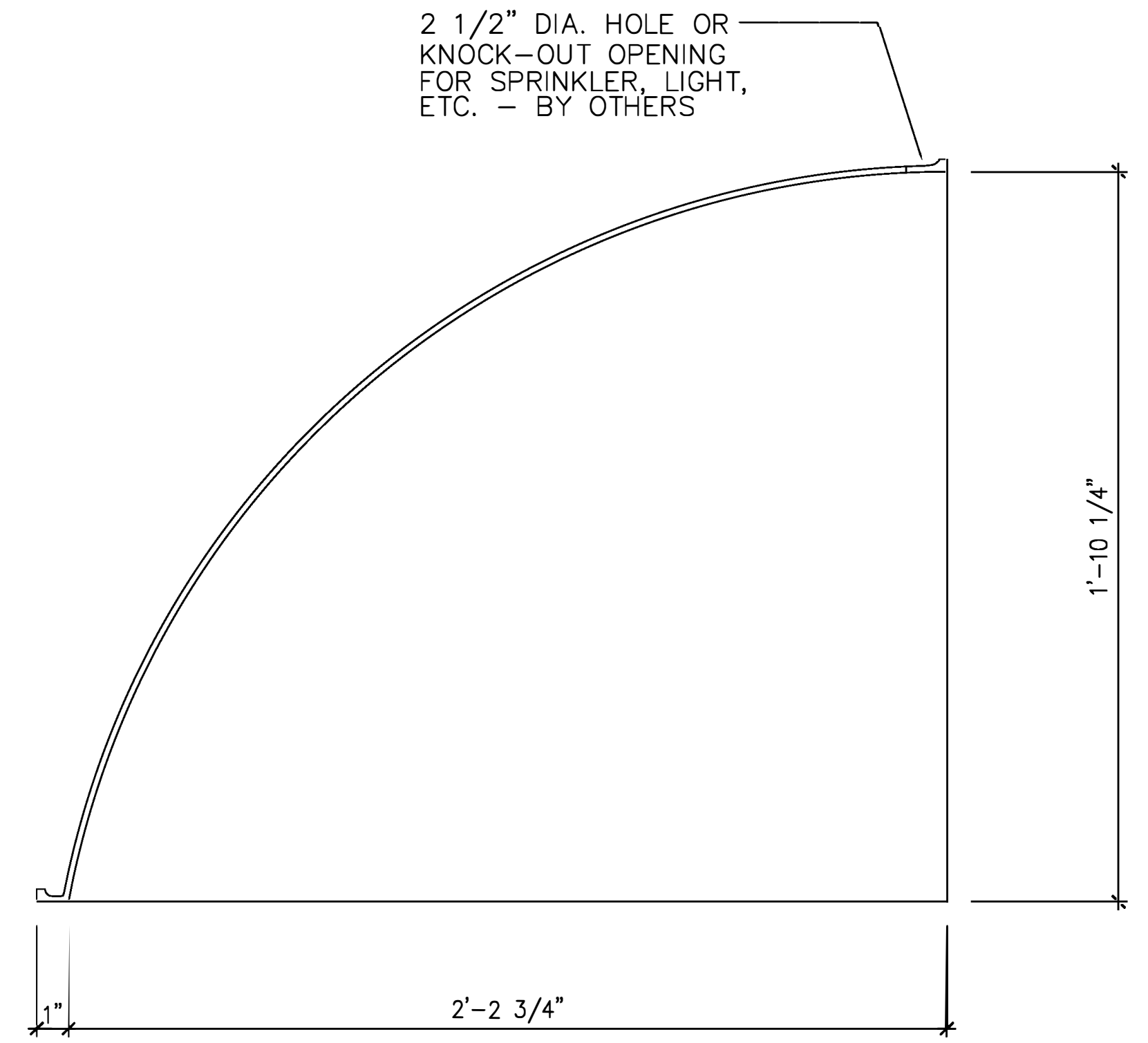
DRAWN BY:
TAN
CHECKED BY:
M.S.
DATE:
07.02.2013
SCALE:
AS SHOWN
DWG FILE NO.
SACC P1.DWG

P1

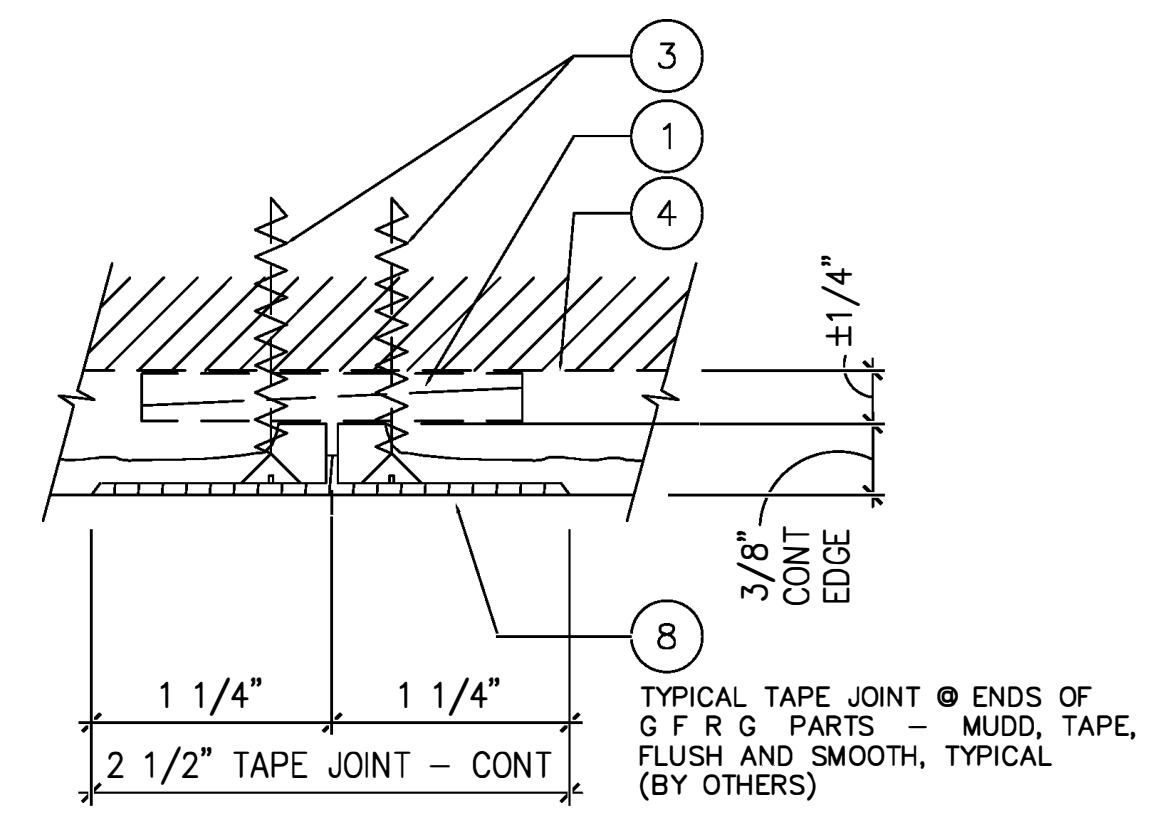
DRAWING 4 OF 8



2 PLAN VIEW 01 / P1
SCALE: 3"=1'-0"



1 DETAIL SECTION
SCALE: 3"=1'-0"



TYPICAL TAPE JOINT @ ENDS OF GFRG PARTS - MUDD, TAPE, FLUSH AND SMOOTH, TYPICAL (BY OTHERS)

REQ'D : (8) 01 / P1 GFRG ROUND DOME
1'-10 1/4"H x 2'-2 3/4"D
HALF ROUND DOME

TOTAL : (8) TO COMPLETE 4 FULL ROUND DOMES

CONNECTION DETAIL

FULL

A

GFRG CUSTOM CEILING DOME - ROUND

AS SHOWN

1

REVISION NO.	BY

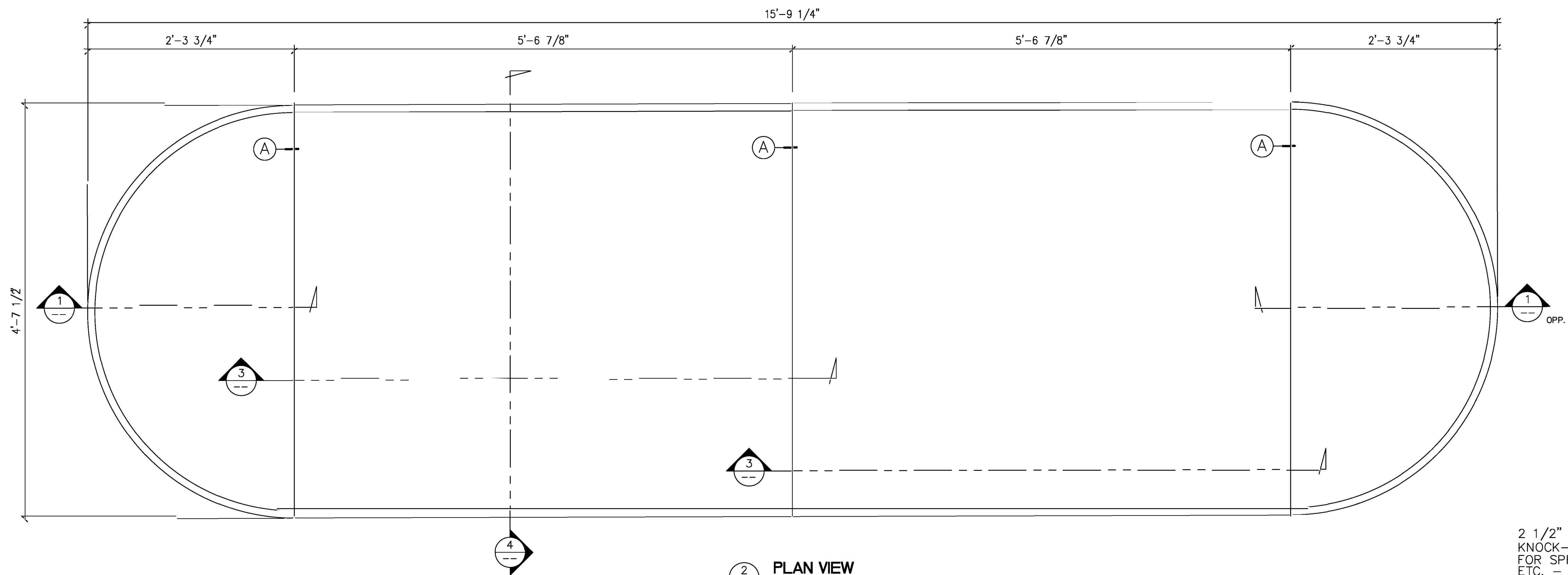
**SAN ANTONIO COUNTRY CLUB
SAN ANTONIO, TEXAS**

FIRST CLASS BUILDING PRODUCTS

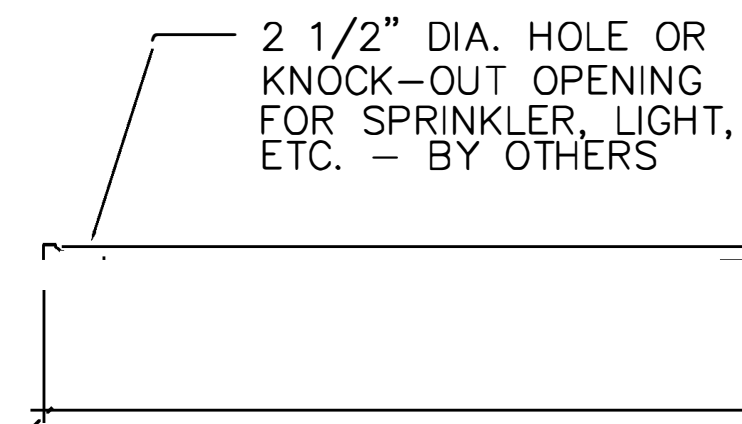
3600 DALLAS HIGHWAY • SUITE 230-387
MARETTA, GEORGIA 30064 • USA
Phone 770.514.8141 • Fax 770.514.0731

DRAWN BY:	TAN
CHECKED BY:	M.S.
DATE:	07.02.2013
SCALE:	AS SHOWN
CAD FILE NO.:	SACC_P2.DWG

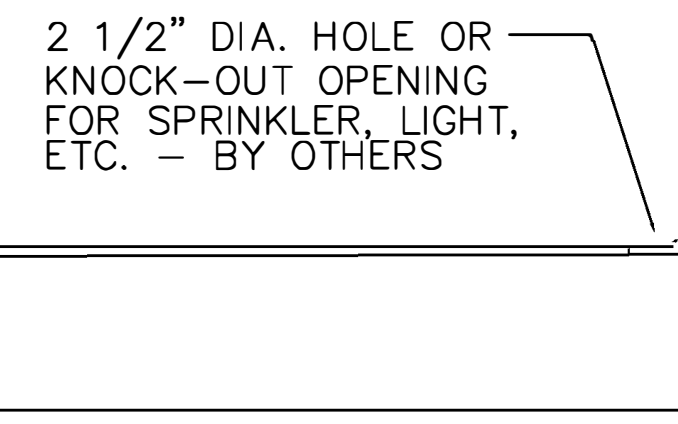
P2



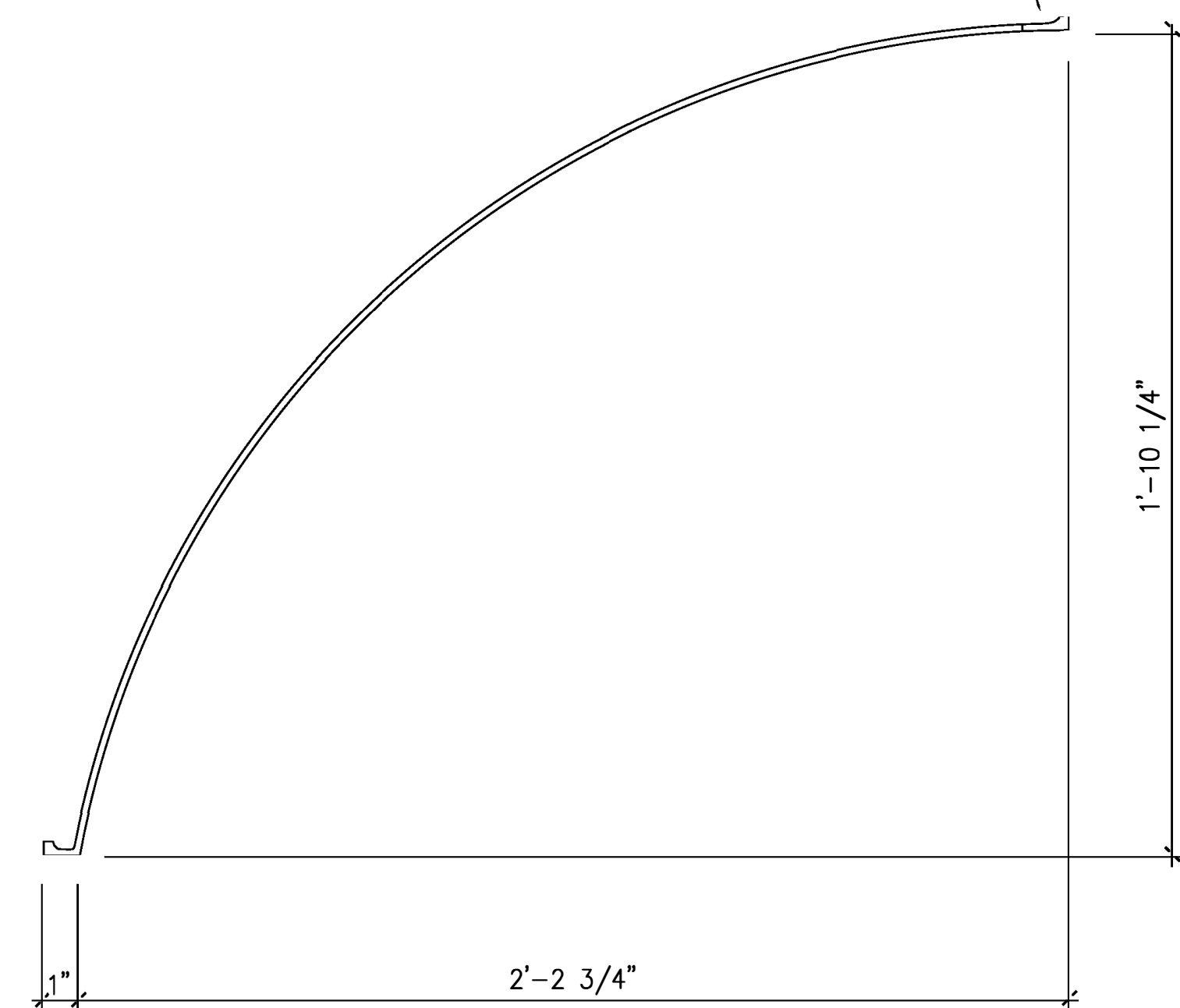
2 PLAN VIEW
SCALE: 1 1/2"=1'-0"



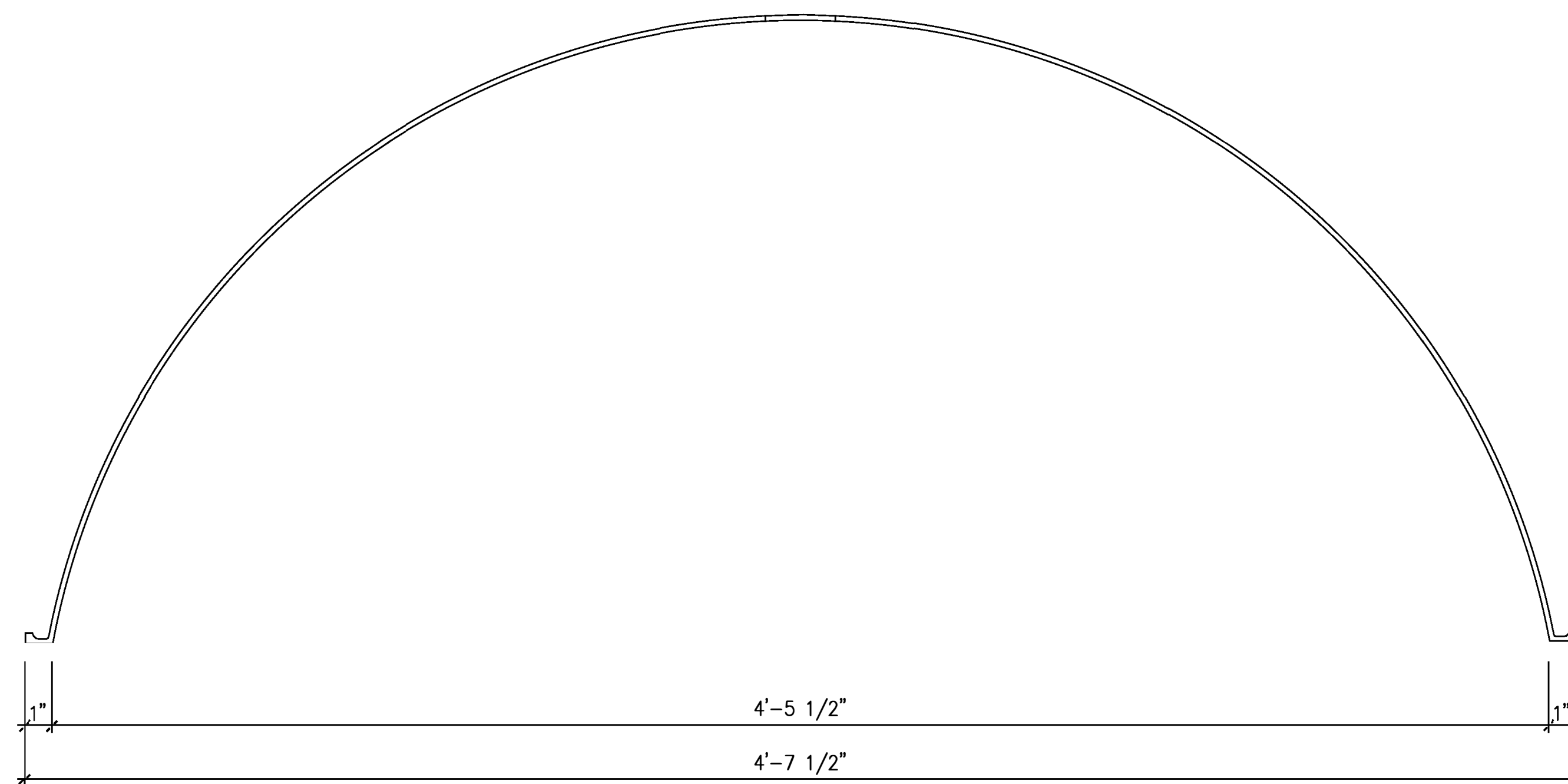
3 DETAIL SECTION 02 / P2
SCALE: 3"=1'-0"



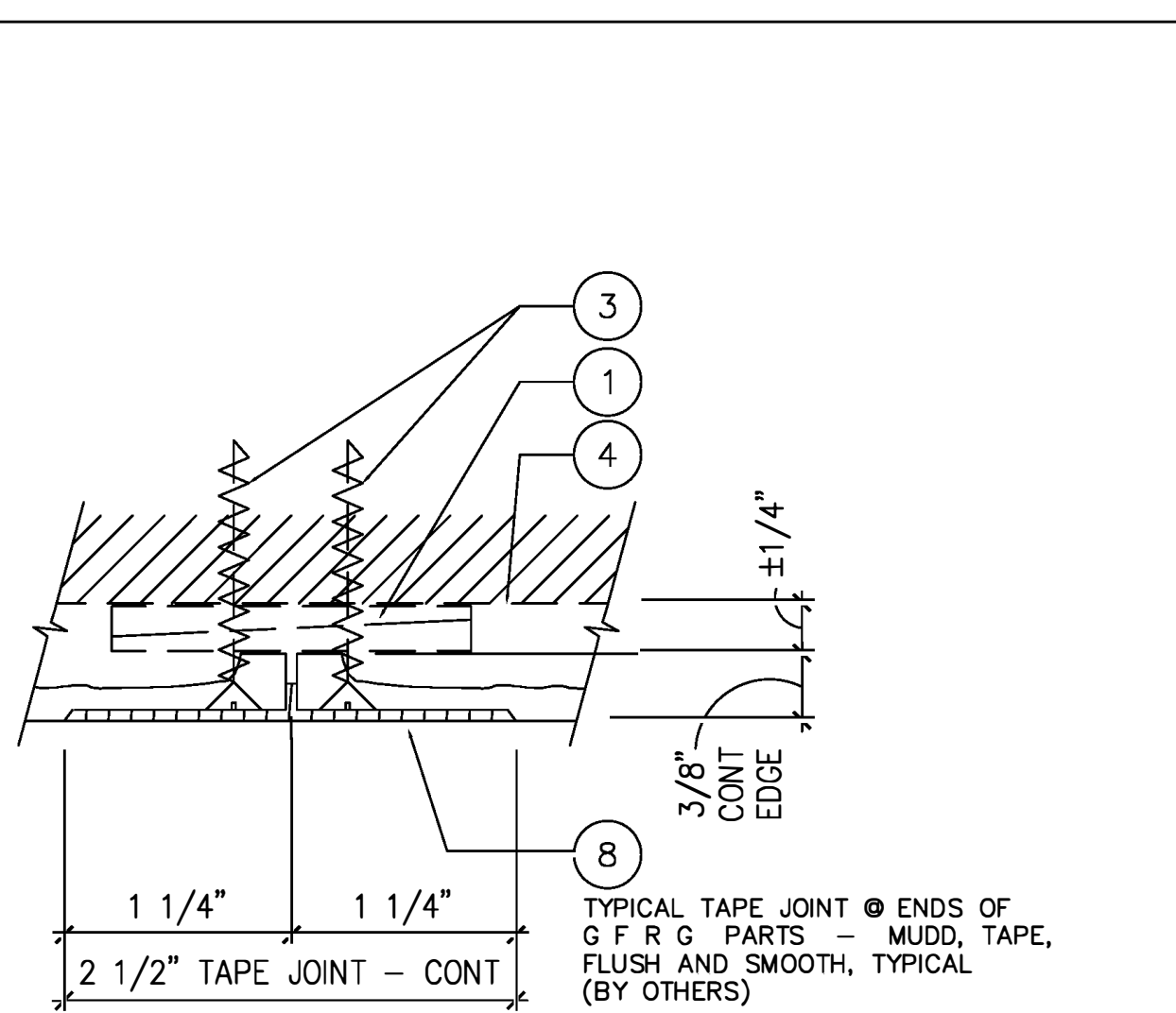
2 1/2" DIA. HOLE OR
KNOCK-OUT OPENING
FOR SPRINKLER, LIGHT,
ETC. - BY OTHERS



1 DETAIL SECTION 01 / P2
SCALE: 3"=1'-0"



4 DETAIL SECTION
SCALE: 3"=1'-0"



- REQ'D : (6) **01 / P2** GFRG OVAL DOME
1'-10 1/4"H x 2'-2 3/4"D
HALF ROUND DOME
- (6) **02 / P2** GFRG OVAL DOME
1'-10 1/4"H x 4'-7 1/2"D
5'-6 7/8" STRAIGHT LENGTH

TOTAL : (12) TO COMPLETE 3 OVAL DOMES

CONNECTION DETAIL

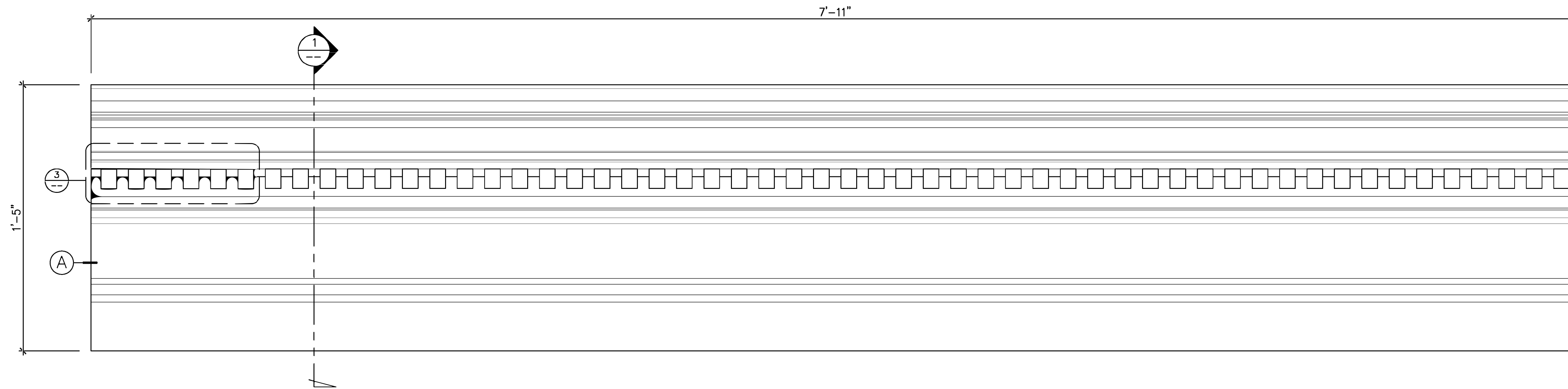
FULL

A

GFRG CUSTOM CEILING DOME - OVAL

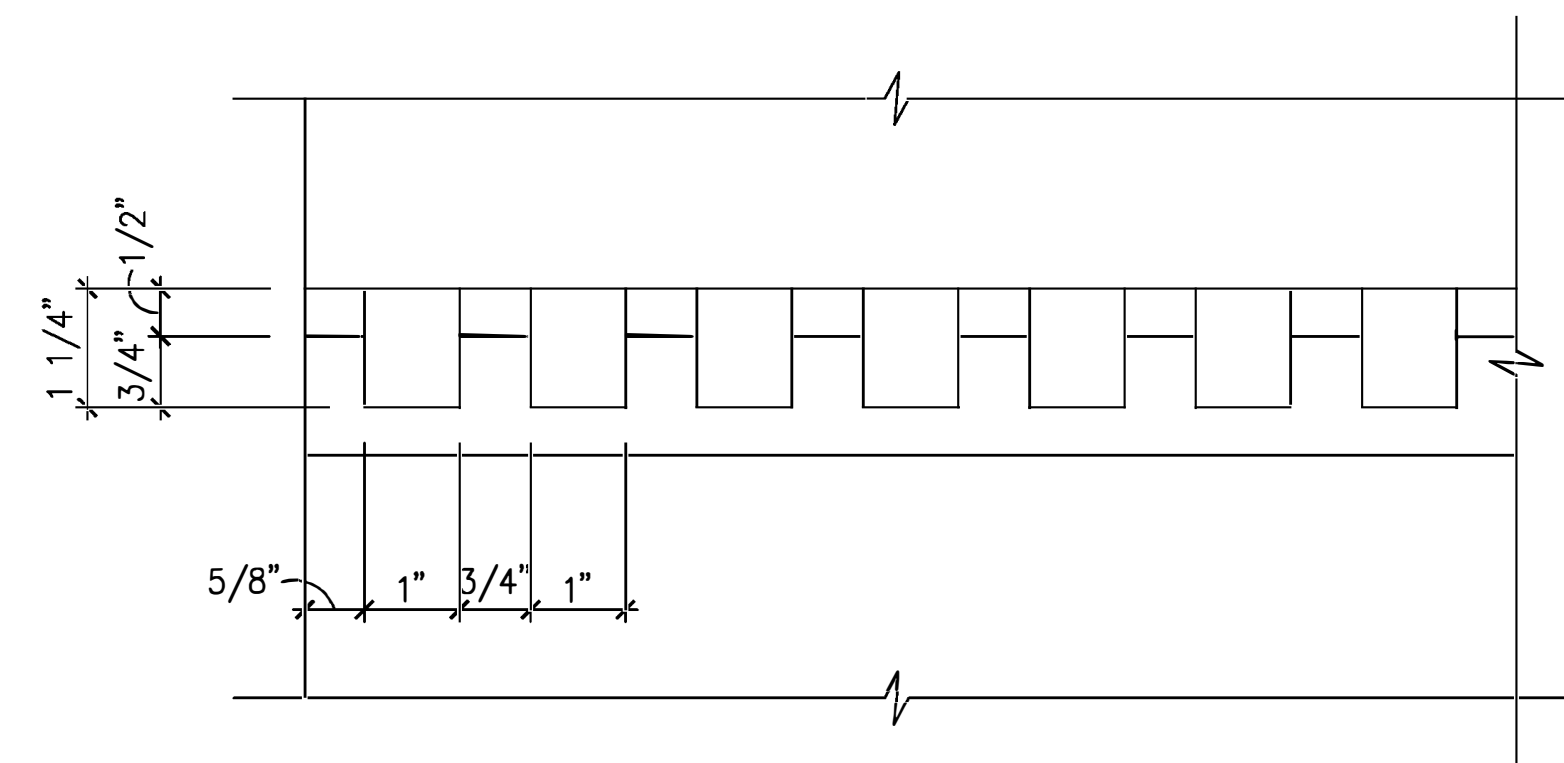
AS SHOWN

1

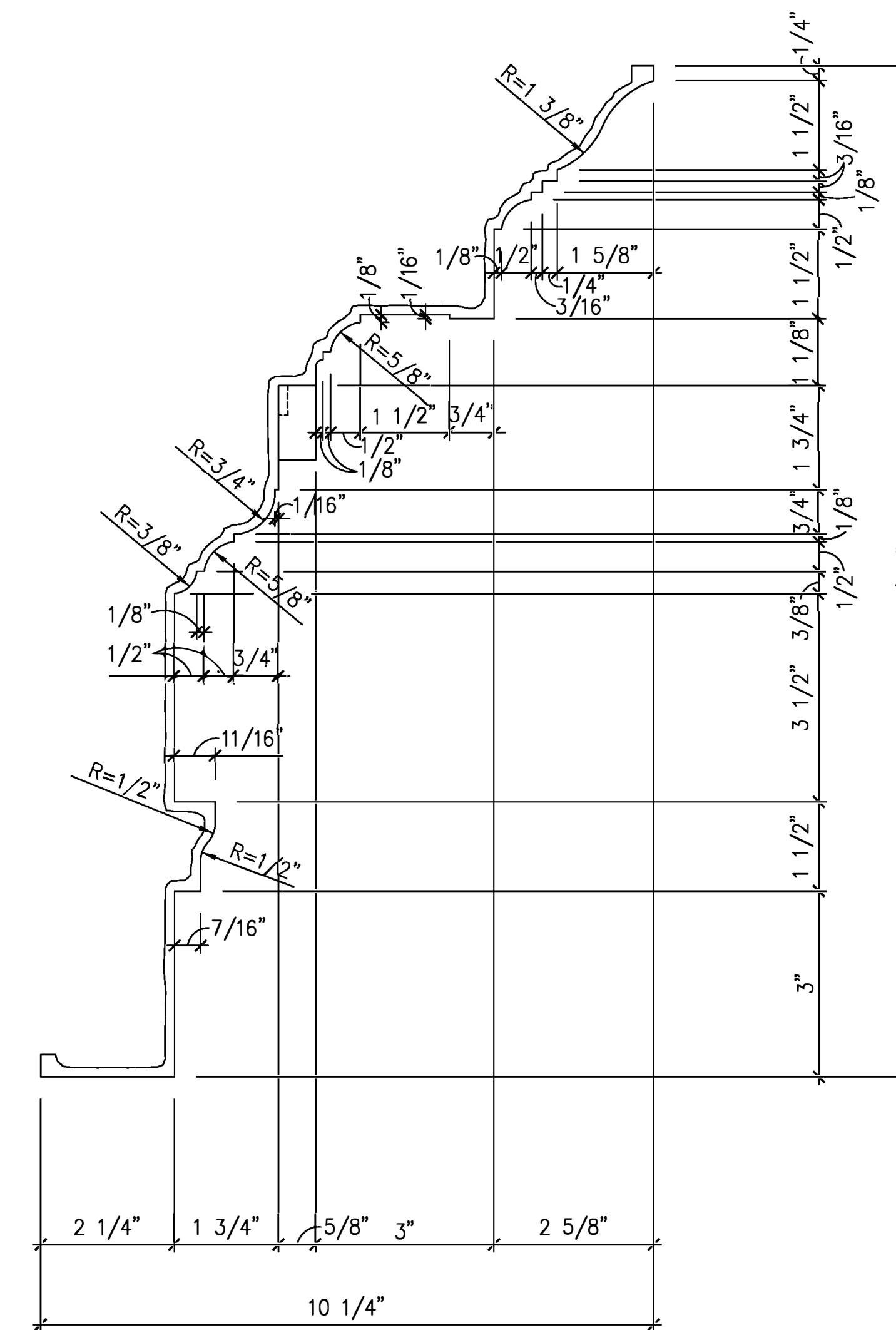


2 ELEVATION 01 / P3
SCALE: 3"=1'-0"

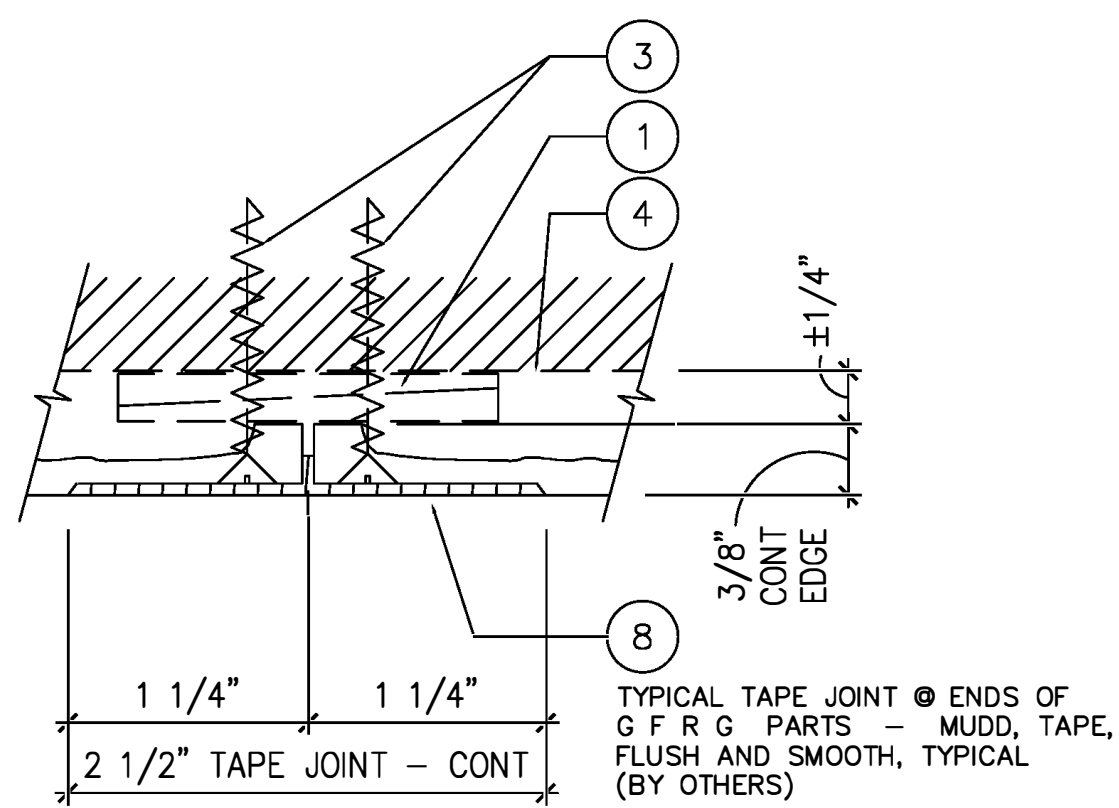
NOTE:
PLEASE CONFIRM THAT WHAT IS SHOWN IN THESE SHOP DRAWINGS ARE ACCEPTABLE. THE REINFORCED EDGE RETURNS AT THE TOP AND BOTTOM OF THESE PARTS CAN NOT BE MANUFACTURED AS SHOWN IN THE ARCHITECTURAL DETAILS.



3 DENTIL ELEVATION
SCALE: 6"=1'-0"



1 DETAIL SECTION
SCALE: 6"=1'-0"



TYPICAL TAPE JOINT @ ENDS OF GFRG PARTS - MUDD, TAPE, FLUSH AND SMOOTH, TYPICAL (BY OTHERS)

REQ'D : (72) 01 / P3 GFRG MOLDING
1'-5"H x 10 1/4"D
7'-11" STRAIGHT LENGTH

TOTAL : (72)

REVISION NO.	BY

SAN ANTONIO COUNTRY CLUB
SAN ANTONIO, TEXAS

FIRST CLASS BUILDING PRODUCTS
3600 DALLAS HIGHWAY • SUITE 230-387
MARIETTA, GEORGIA 30064 • USA
Phone 770.514.8141 • Fax 770.514.0731

DRAWN BY:	TAN
CHECKED BY:	M.S.
DATE:	07.02.2013
SCALE:	AS SHOWN
CAD FILE NO.:	SACC_P3.DWG

P3

DRAWING 6 OF 8

CONNECTION DETAIL

FULL

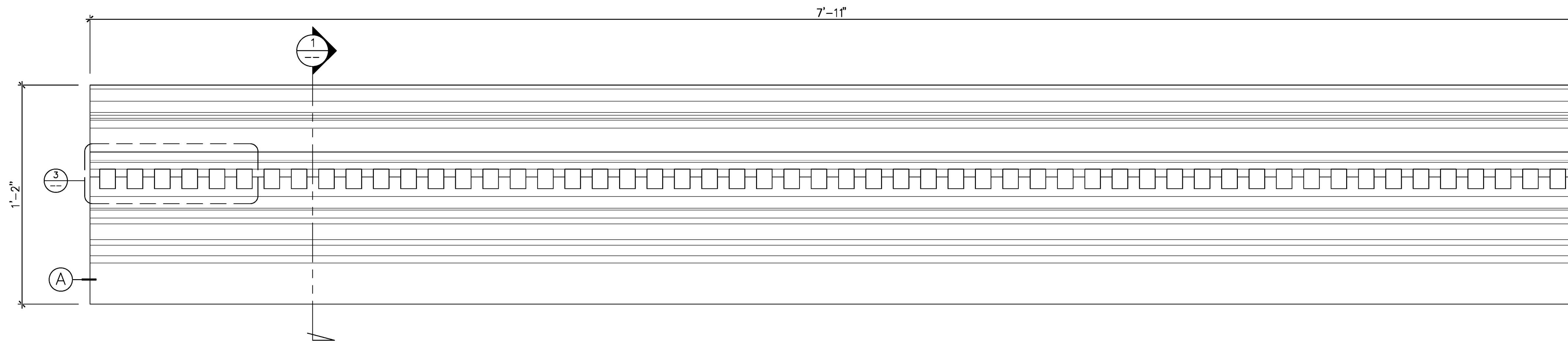
A

(MAIN BALLROOM AREAS)

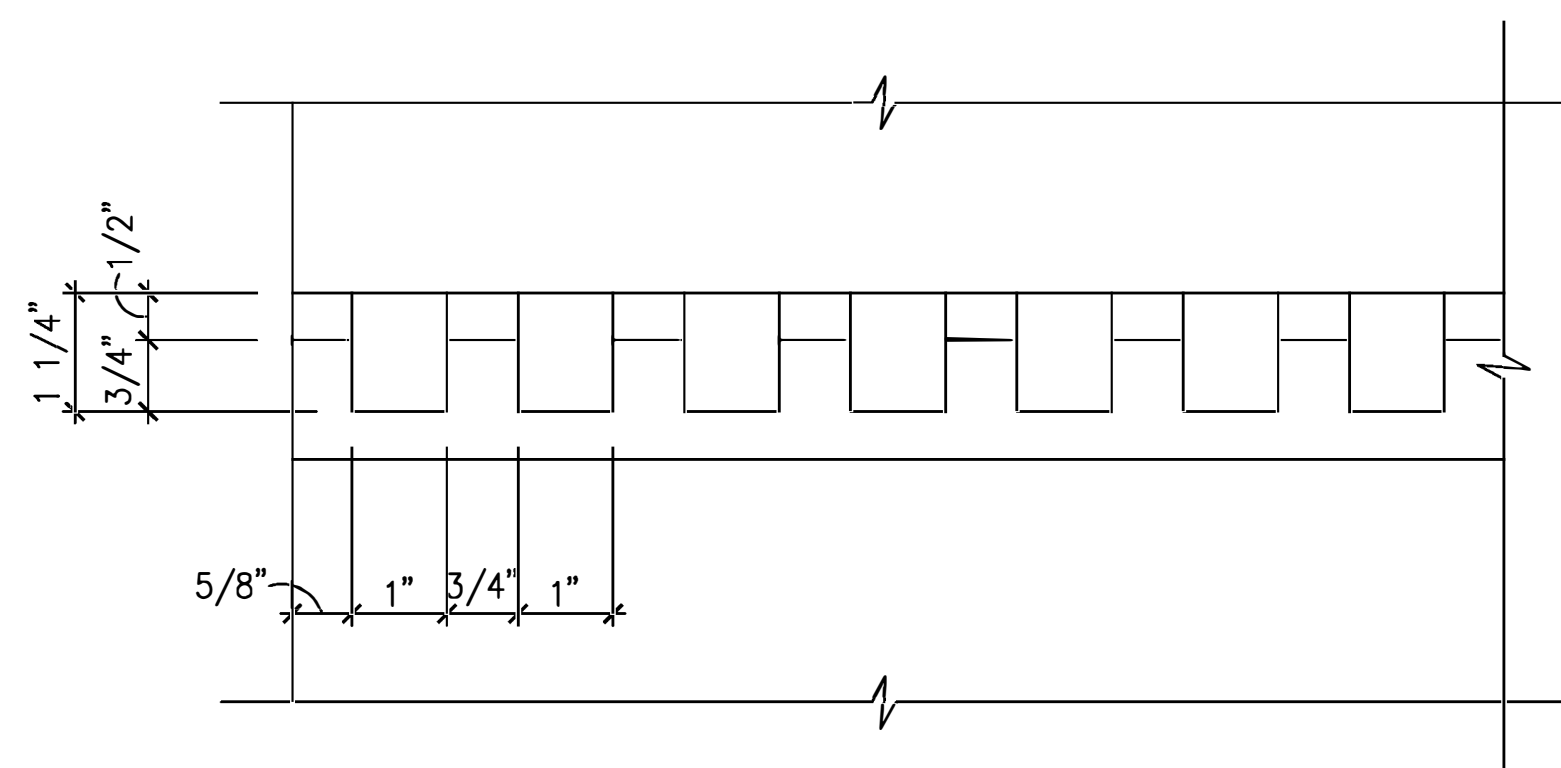
GFRG CUSTOM CROWN MOULDING - TYPE 'A'

AS SHOWN

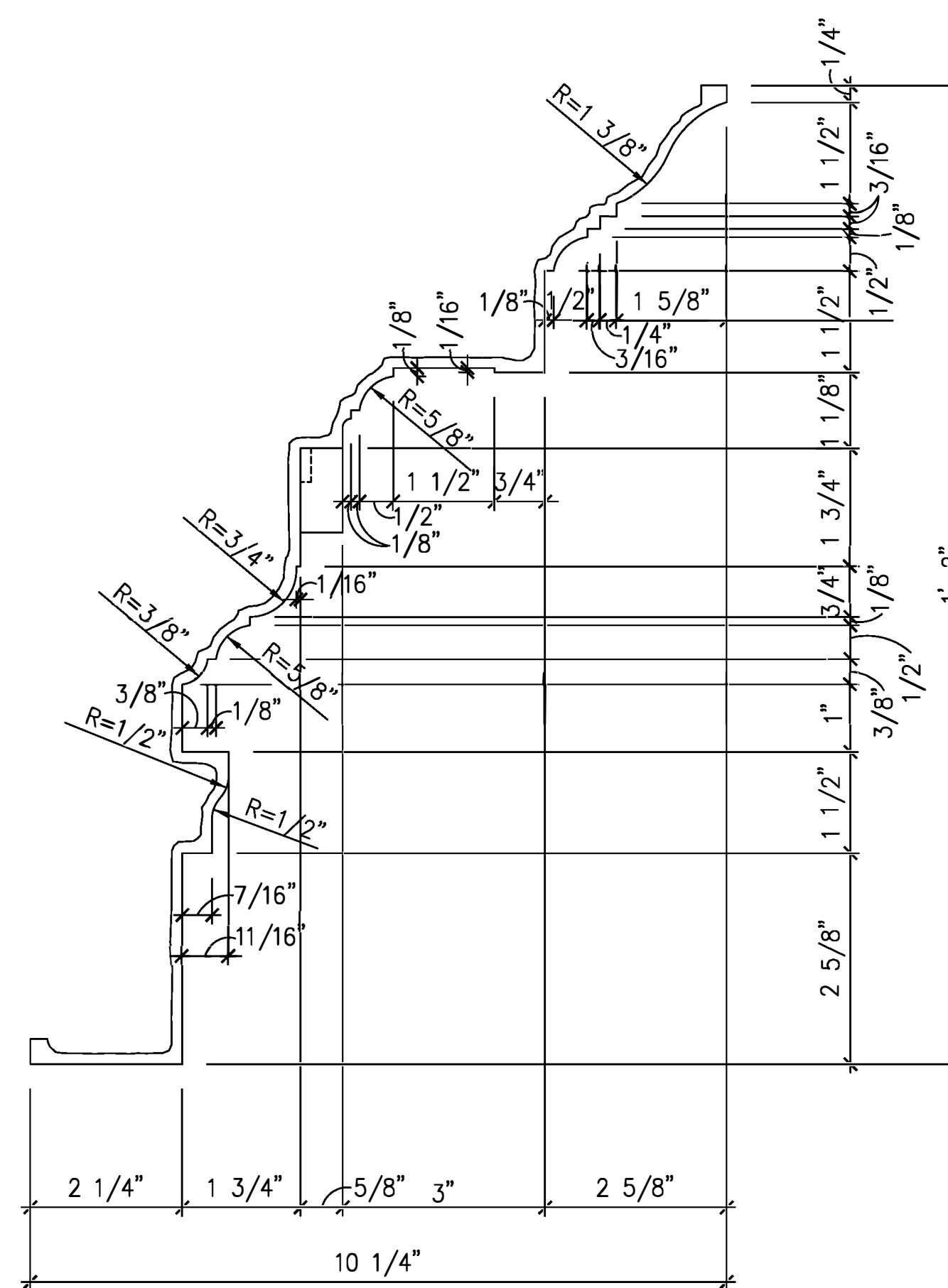
1



2 ELEVATION 01 / P4
SCALE: 3"=1'-0"

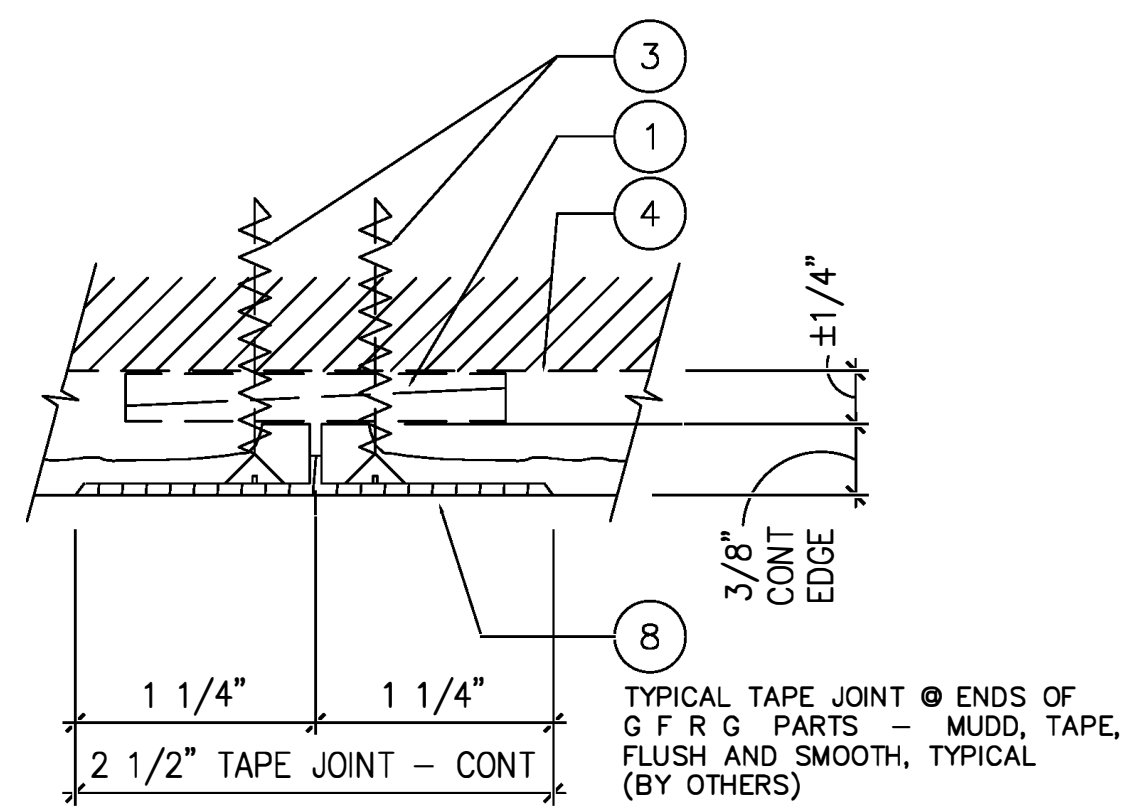


3 DENTIL ELEVATION
SCALE: 6"=1'-0"



1 DETAIL SECTION
SCALE: 6"=1'-0"

NOTE:
PLEASE CONFIRM THAT WHAT IS SHOWN IN THESE SHOP DRAWINGS ARE ACCEPTABLE. THE REINFORCED EDGE RETURNS AT THE TOP AND BOTTOM OF THESE PARTS CAN NOT BE MANUFACTURED AS SHOWN IN THE ARCHITECTURAL DETAILS.



REQ'D : (32) 01 / P4 GFRG MOLDING
1'-2"H x 10 1/4"D
7'-11" STRAIGHT LENGTH

TOTAL : (32)

REVISION NO.	BY:

SAN ANTONIO COUNTRY CLUB
SAN ANTONIO, TEXAS

FIRST CLASS BUILDING PRODUCTS

3600 DALLAS HIGHWAY • SUITE 230-387
MARIETTA, GEORGIA 30064 • USA
Phone 770.514.8141 • Fax 770.514.0731

DRAWN BY: TAN
CHECKED BY: M.S.
DATE: 07.02.2013
SCALE: AS SHOWN
CWD FILE NO. SACC P4.DWG

P4

DRAWING 7 OF 8

CONNECTION DETAIL

FULL

A

(MAIN BALLROOM AREAS)

GFRG CUSTOM CROWN MOULDING – TYPE 'B'

AS SHOWN

1

REVISION NO.	BY:

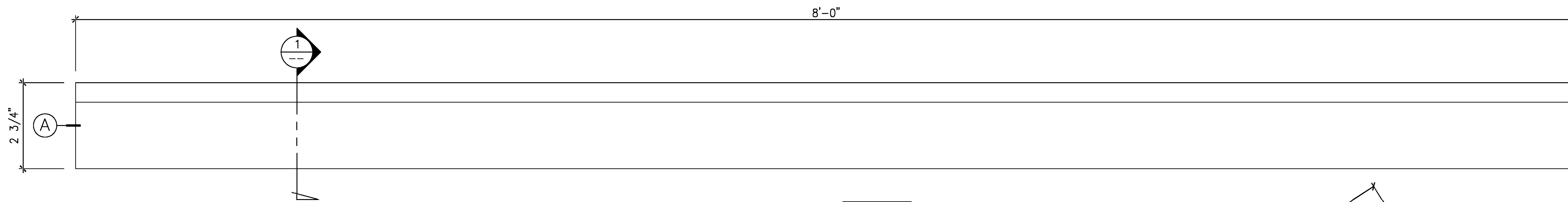
SAN ANTONIO COUNTRY CLUB
SAN ANTONIO, TEXAS

FIRST CLASS BUILDING PRODUCTS

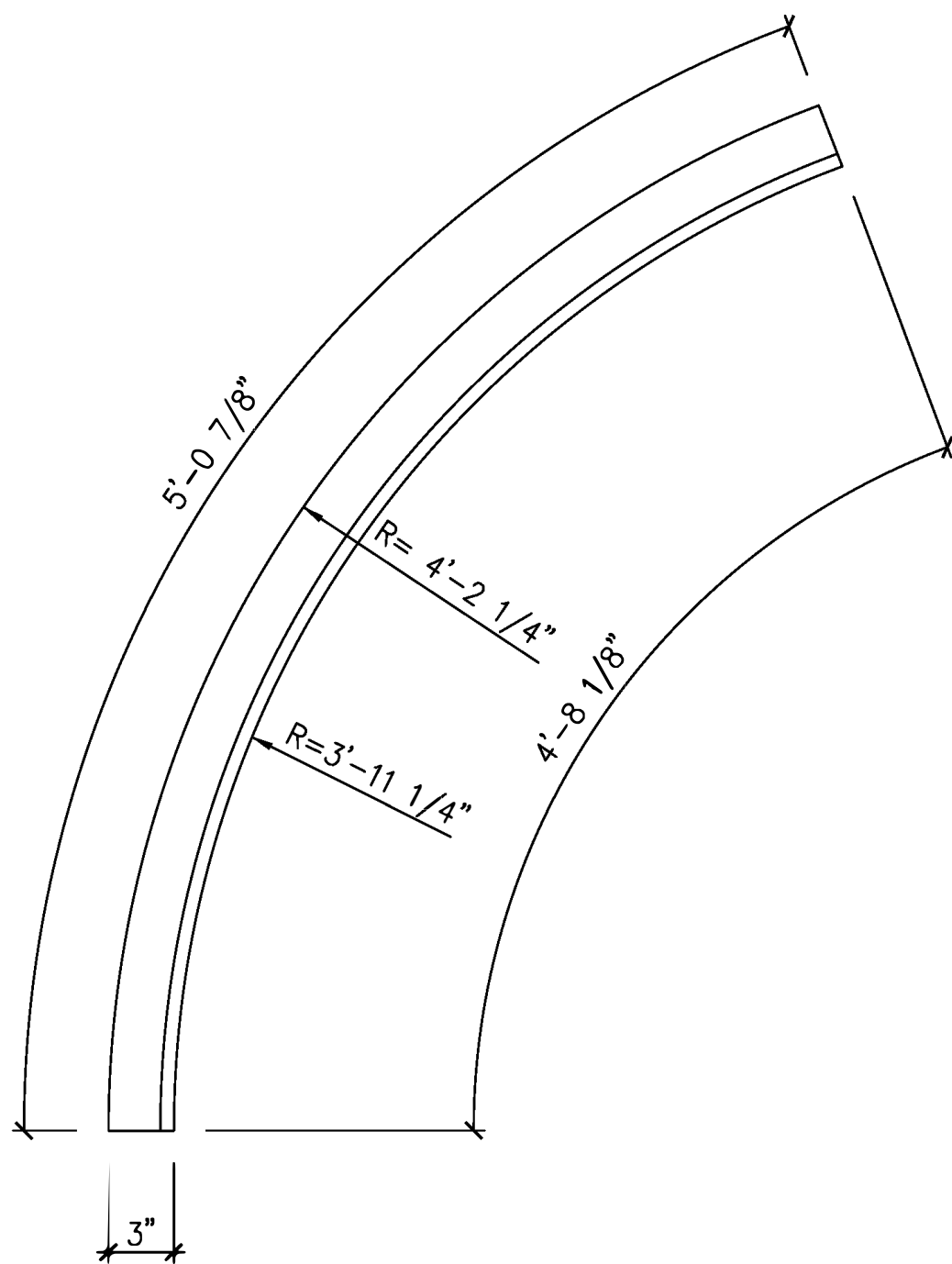
3600 DALLAS HIGHWAY • SUITE 230-387
MARIETTA, GEORGIA 30064 • USA
Phone 770.514.8141 • Fax 770.514.0731

DRAWN BY:	TAN
CHECKED BY:	M.S.
DATE:	07.02.2013
SCALE:	AS SHOWN
CAD FILE NO.:	SACC_P5.DWG

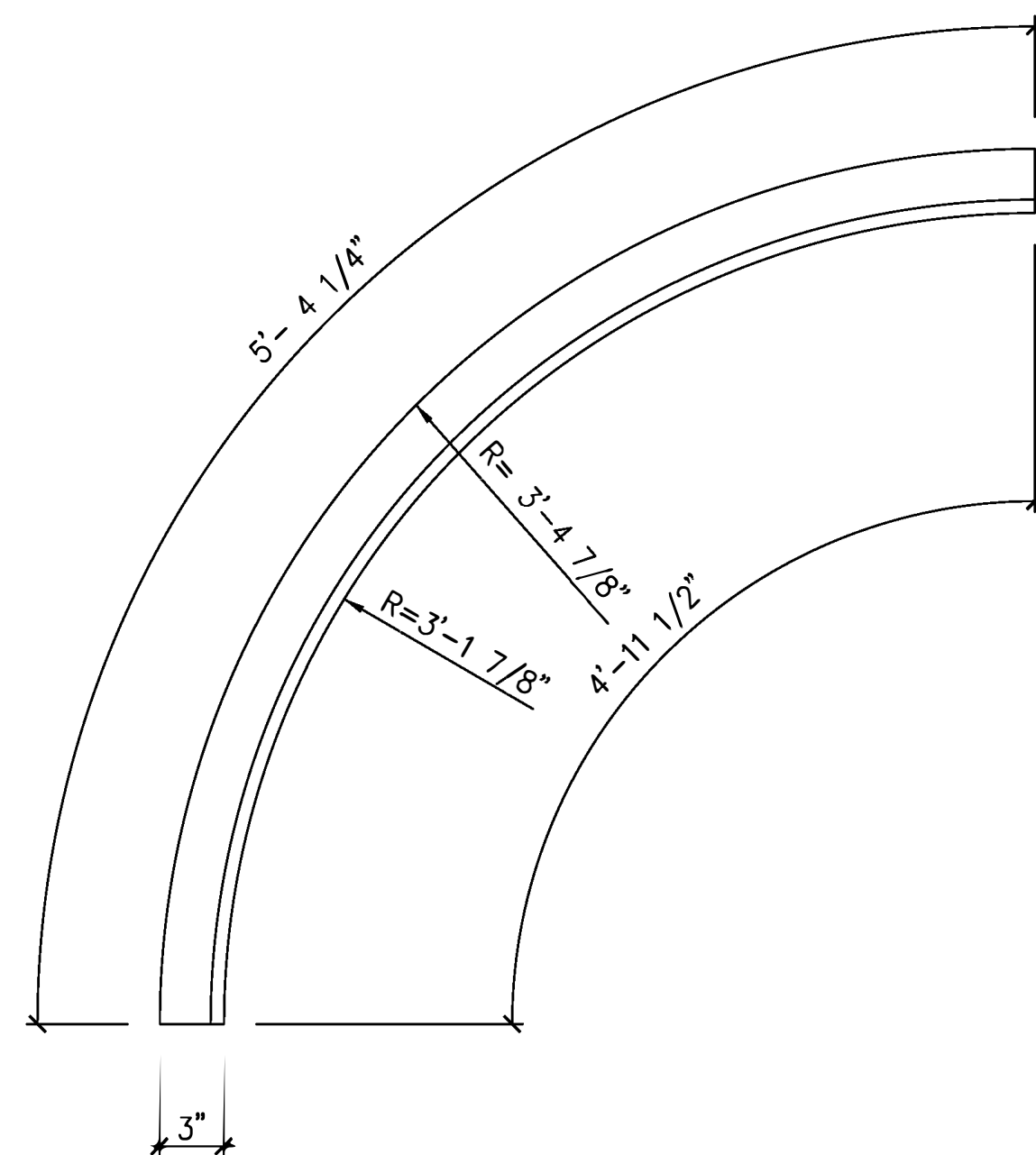
P5



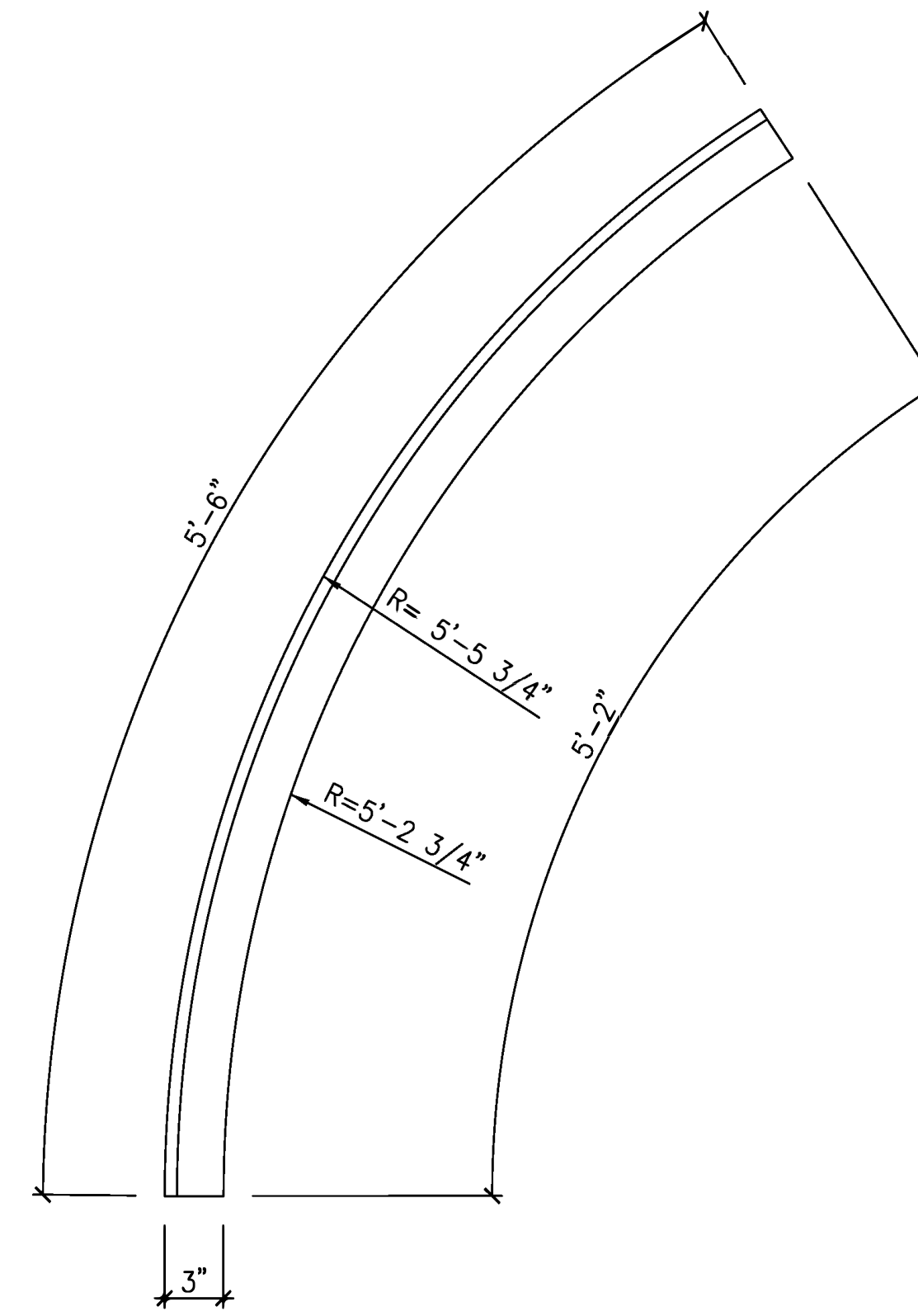
2 ELEVATION 01 / P5
SCALE: 6"=1'-0"



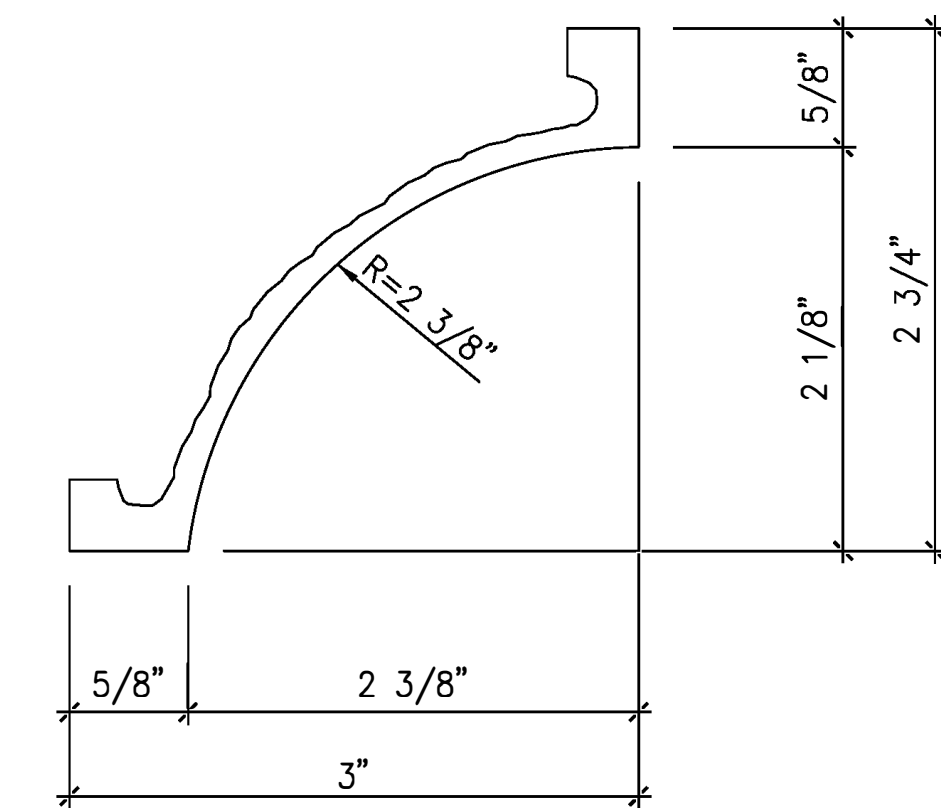
5 REFLECTIVE PLAN VIEW 04 / P5
SCALE: 3"=1'-0"



4 REFLECTIVE PLAN VIEW 03 / P5
SCALE: 3"=1'-0"

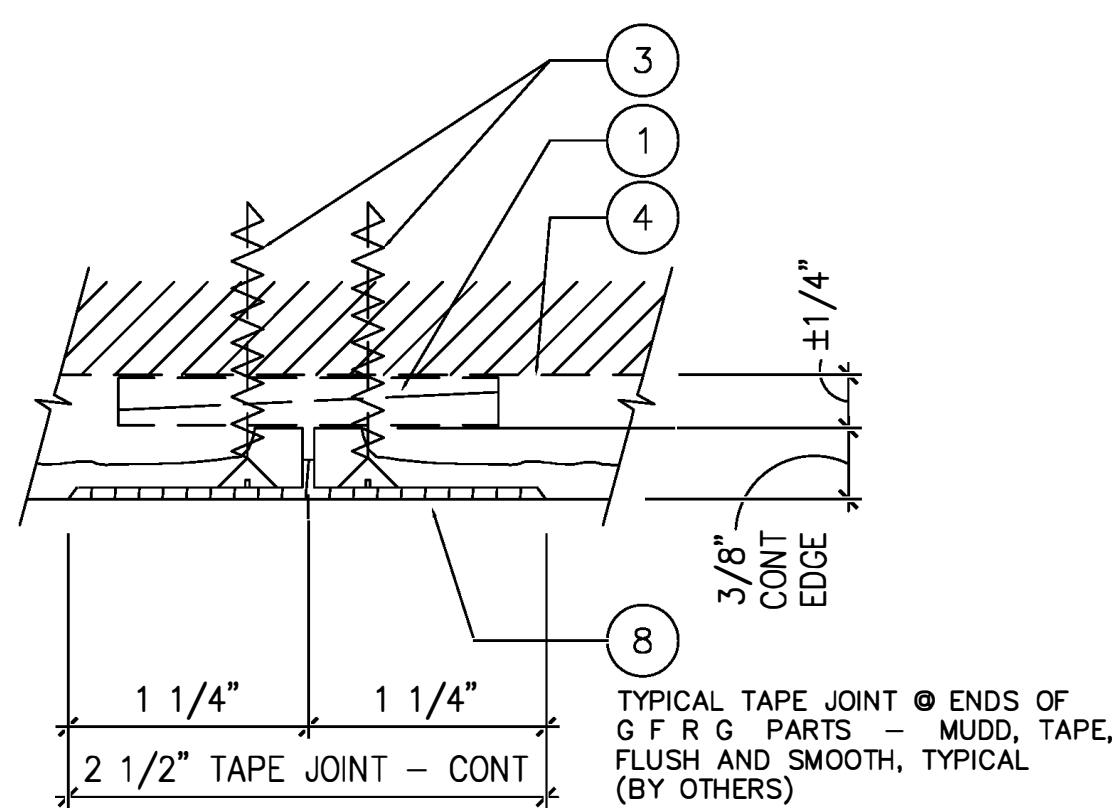


3 REFLECTIVE PLAN VIEW 02 / P5
SCALE: 3"=1'-0"

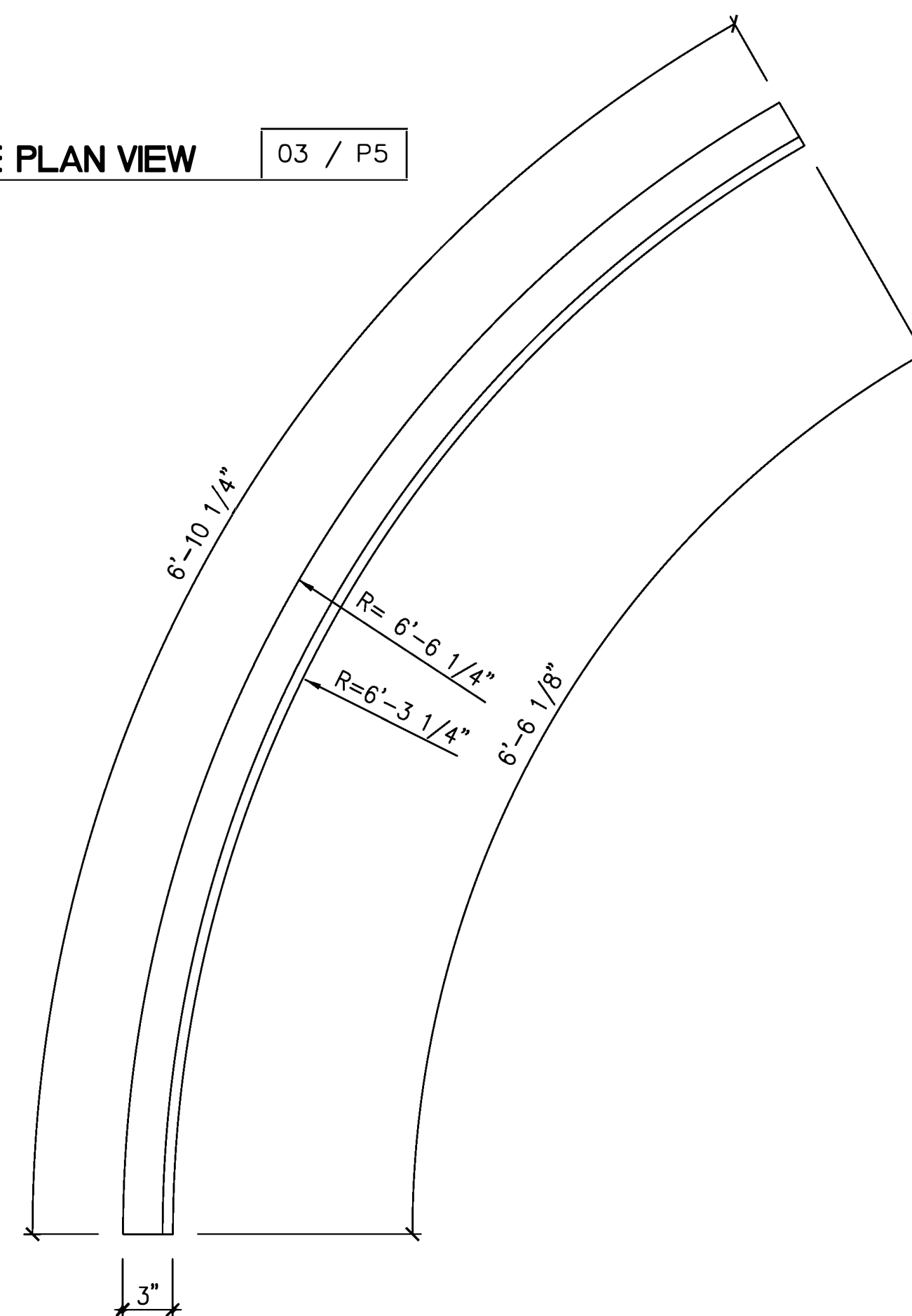


1 DETAIL SECTION
SCALE: FULL

NOTE:
PLEASE CONFIRM THAT WHAT IS SHOWN IN THESE SHOP DRAWINGS ARE ACCEPTABLE. THE REINFORCED EDGE RETURNS AT THE TOP AND BOTTOM OF THESE PARTS CAN NOT BE MANUFACTURED AS SHOWN IN THE ARCHITECTURAL DETAILS.



TYPICAL TAPE JOINT @ ENDS OF GFRG PARTS - MUDD, TAPE, FLUSH AND SMOOTH, TYPICAL (BY OTHERS)



6 REFLECTIVE PLAN VIEW 05 / P5
SCALE: 3"=1'-0"

REQ'D :	(108)	01 / P5	GFRG MOLDING 2 3/4"H x 3"D 8'-0" STRAIGHT LENGTH
	(4)	02 / P5	GFRG MOLDING-INSIDE RADIUS 2 3/4"H x 3"D 5'-6" ARC LENGTH
	(16)	03 / P5	GFRG MOLDING-OUTSIDE RADIUS 2 3/4"H x 3"D 5'-4 1/4" ARC LENGTH
	(12)	04 / P5	GFRG MOLDING-OUTSIDE RADIUS 2 3/4"H x 3"D 5'-0 7/8" ARC LENGTH
	(4)	05 / P5	GFRG MOLDING-OUTSIDE RADIUS 2 3/4"H x 3"D 6'-10 1/4" ARC LENGTH

TOTAL : (144)

CONNECTION DETAIL

FULL

A

GFRG CUSTOM CROWN MOULDING - TYPE 'C'

AS SHOWN

1

REVISION NO.	BY

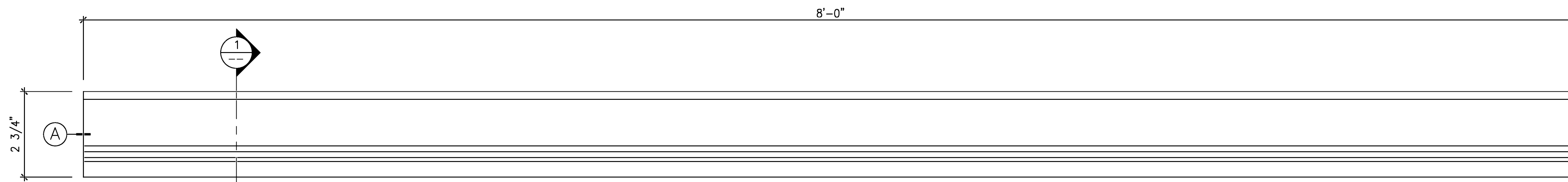
**SAN ANTONIO COUNTRY CLUB
SAN ANTONIO, TEXAS**

FIRST CLASS BUILDING PRODUCTS

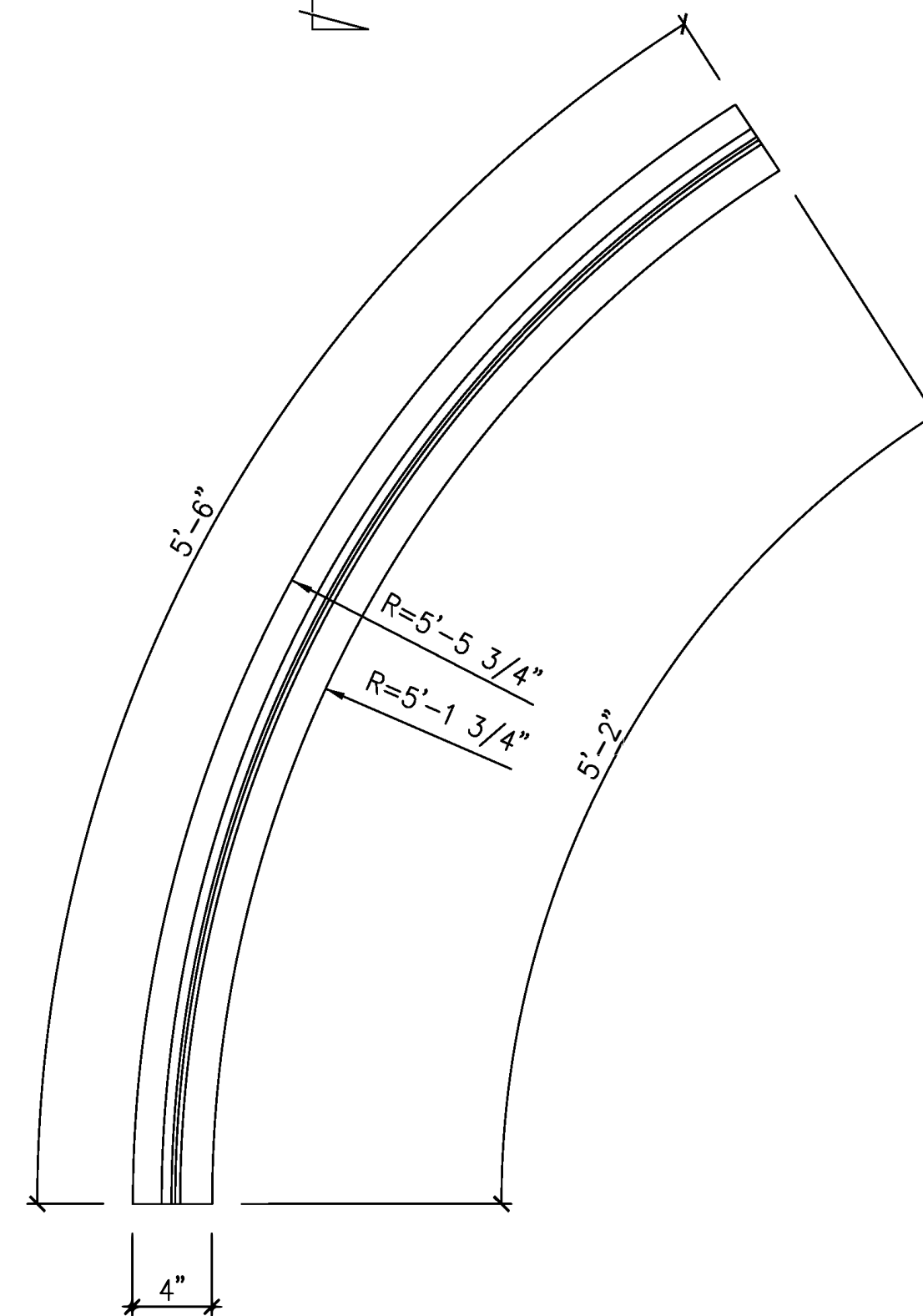
3600 DALLAS HIGHWAY • SUITE 230-387
MARIETTA, GEORGIA 30064 • USA
Phone 770.514.8141 • Fax 770.514.0731

DRAWN BY:	TAN
CHECKED BY:	M.S.
DATE:	07.02.2013
SCALE:	AS SHOWN
CDG FILE NO.:	SACC_P6.DWG

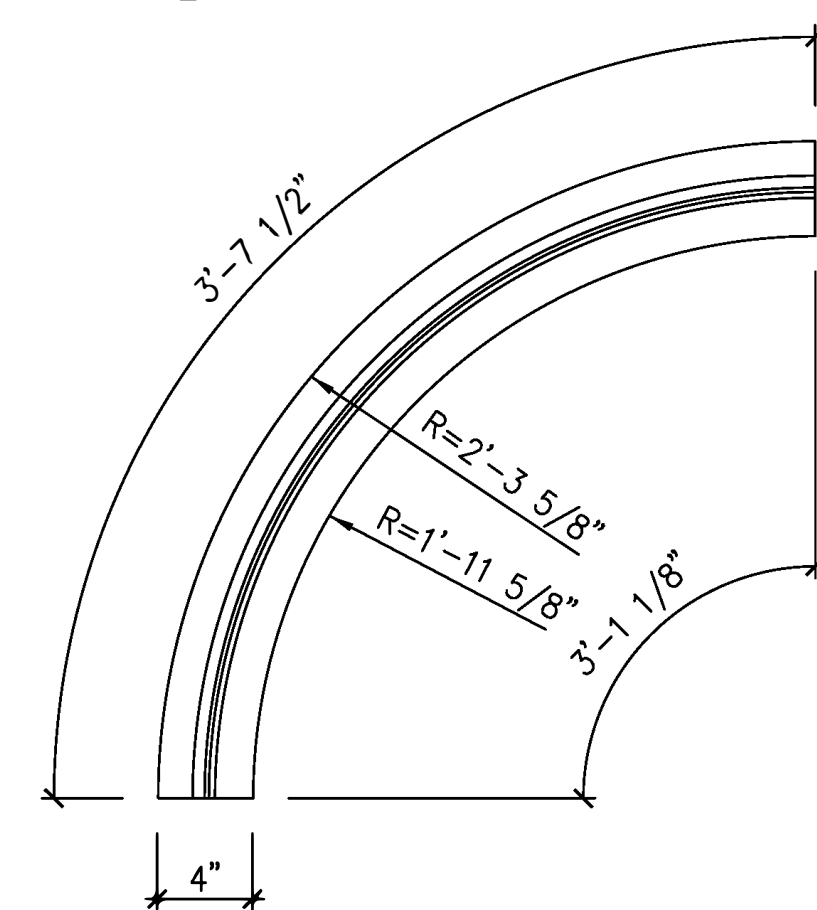
P6



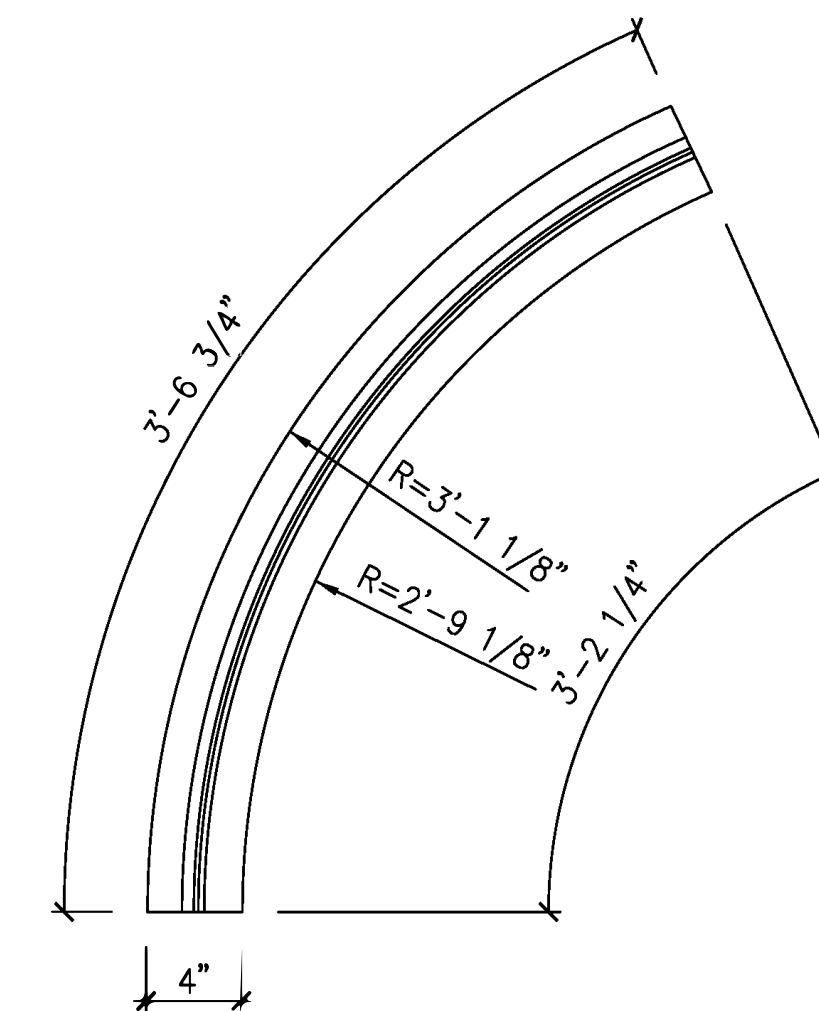
2 ELEVATION 01 / P6
SCALE: 6"=1'-0"



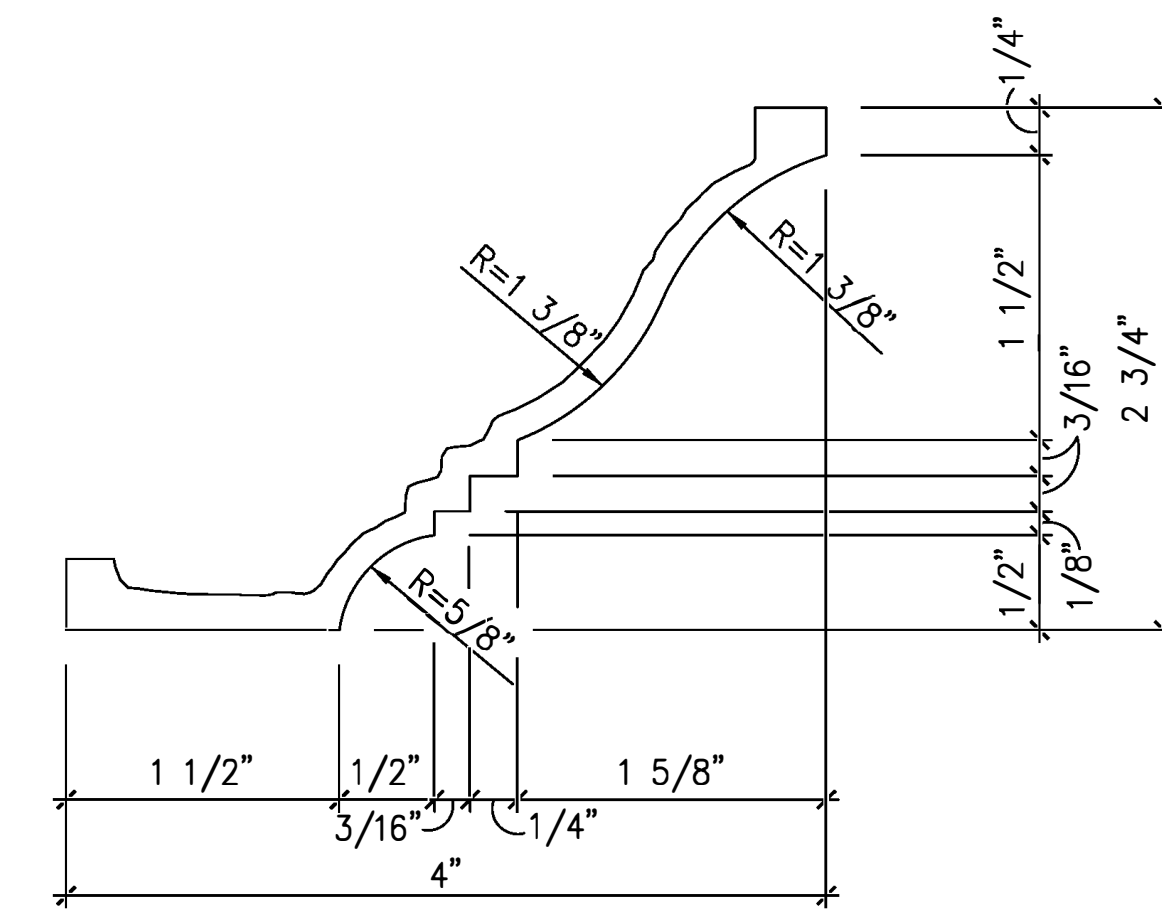
5 REFLECTIVE PLAN VIEW 04 / P6
SCALE: 3"=1'-0"



4 REFLECTIVE PLAN VIEW 03 / P6
SCALE: 3"=1'-0"

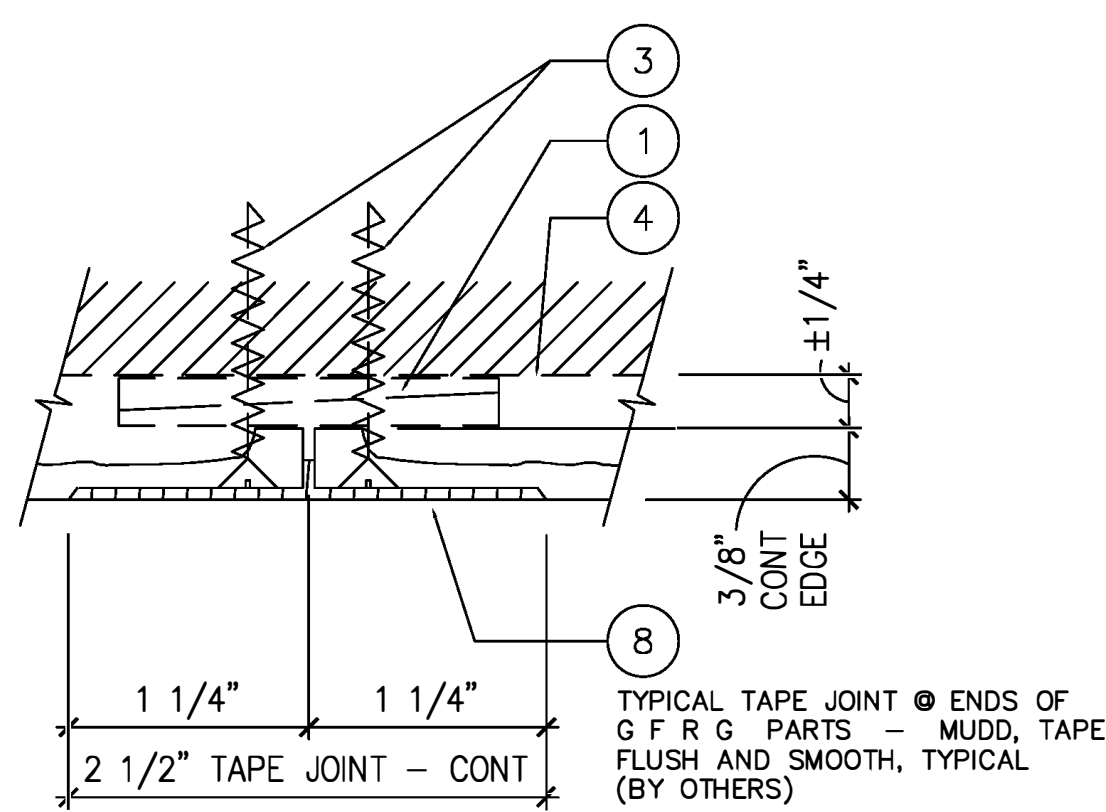


3 REFLECTIVE PLAN VIEW 02 / P6
SCALE: 3"=1'-0"



1 DETAIL SECTION P6
SCALE: FULL

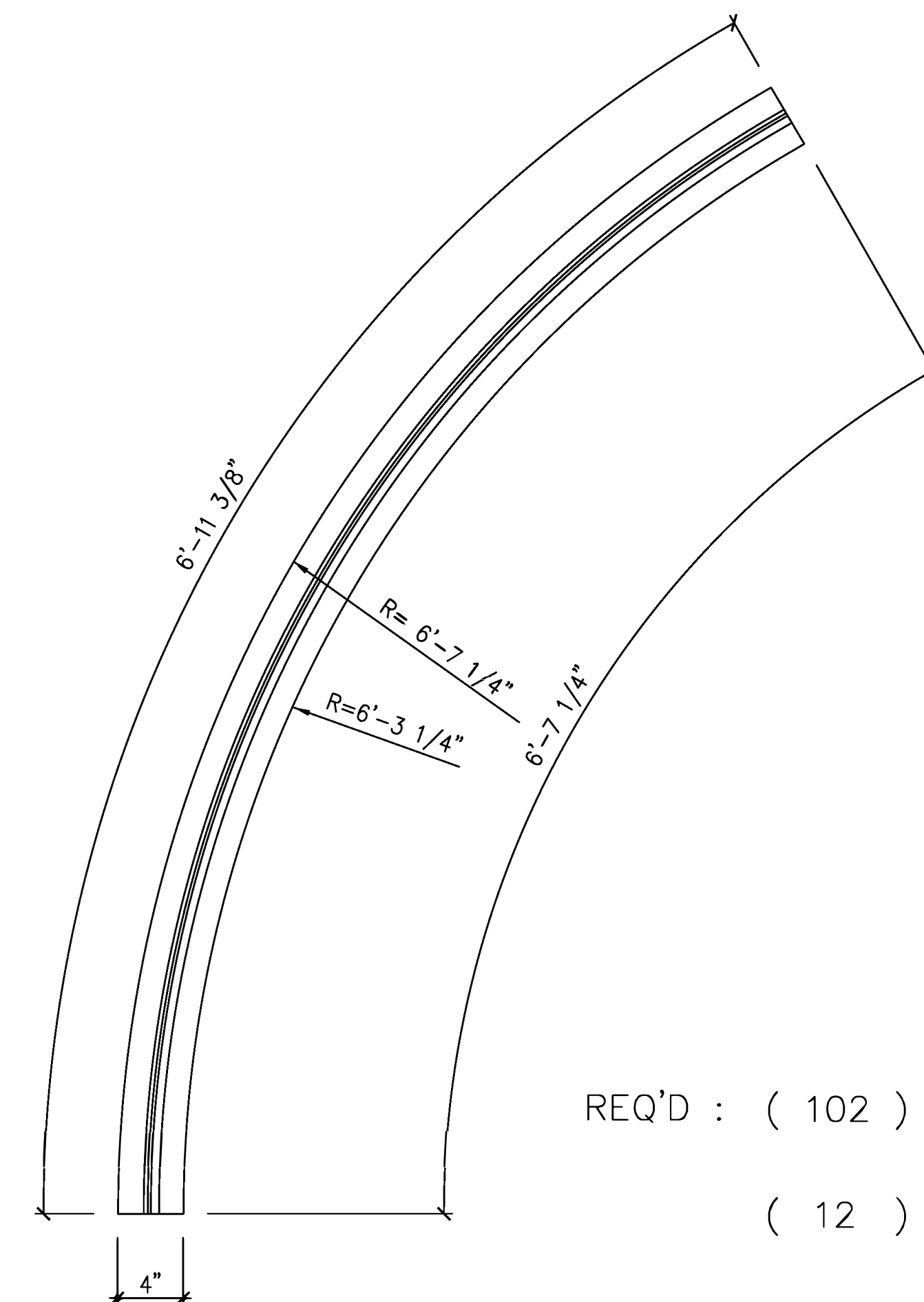
NOTE:
PLEASE CONFIRM THAT WHAT IS SHOWN IN THESE SHOP DRAWINGS ARE ACCEPTABLE. THE REINFORCED EDGE RETURNS AT THE TOP AND BOTTOM OF THESE PARTS CAN NOT BE MANUFACTURED AS SHOWN IN THE ARCHITECTURAL DETAILS.



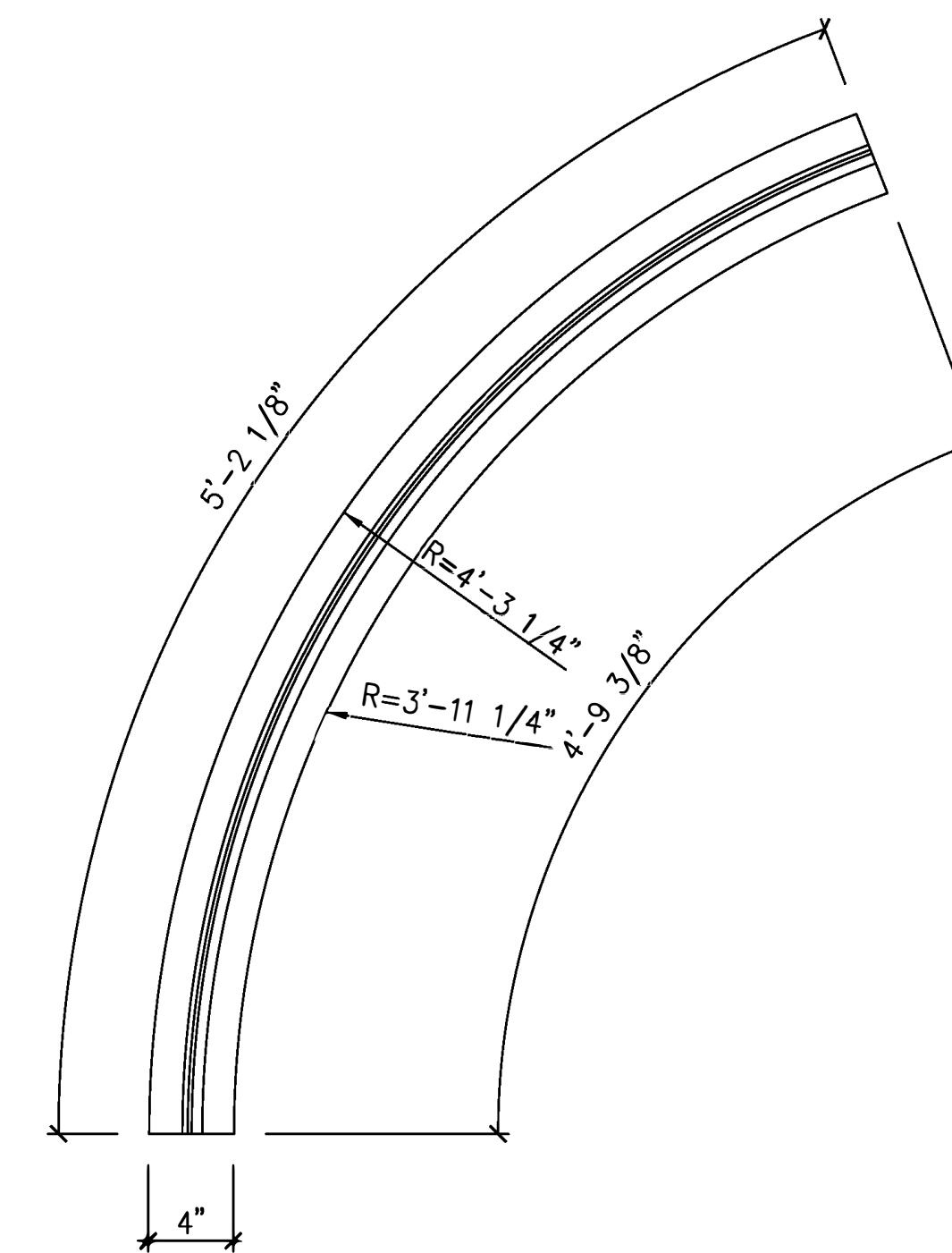
CONNECTION DETAIL

FULL

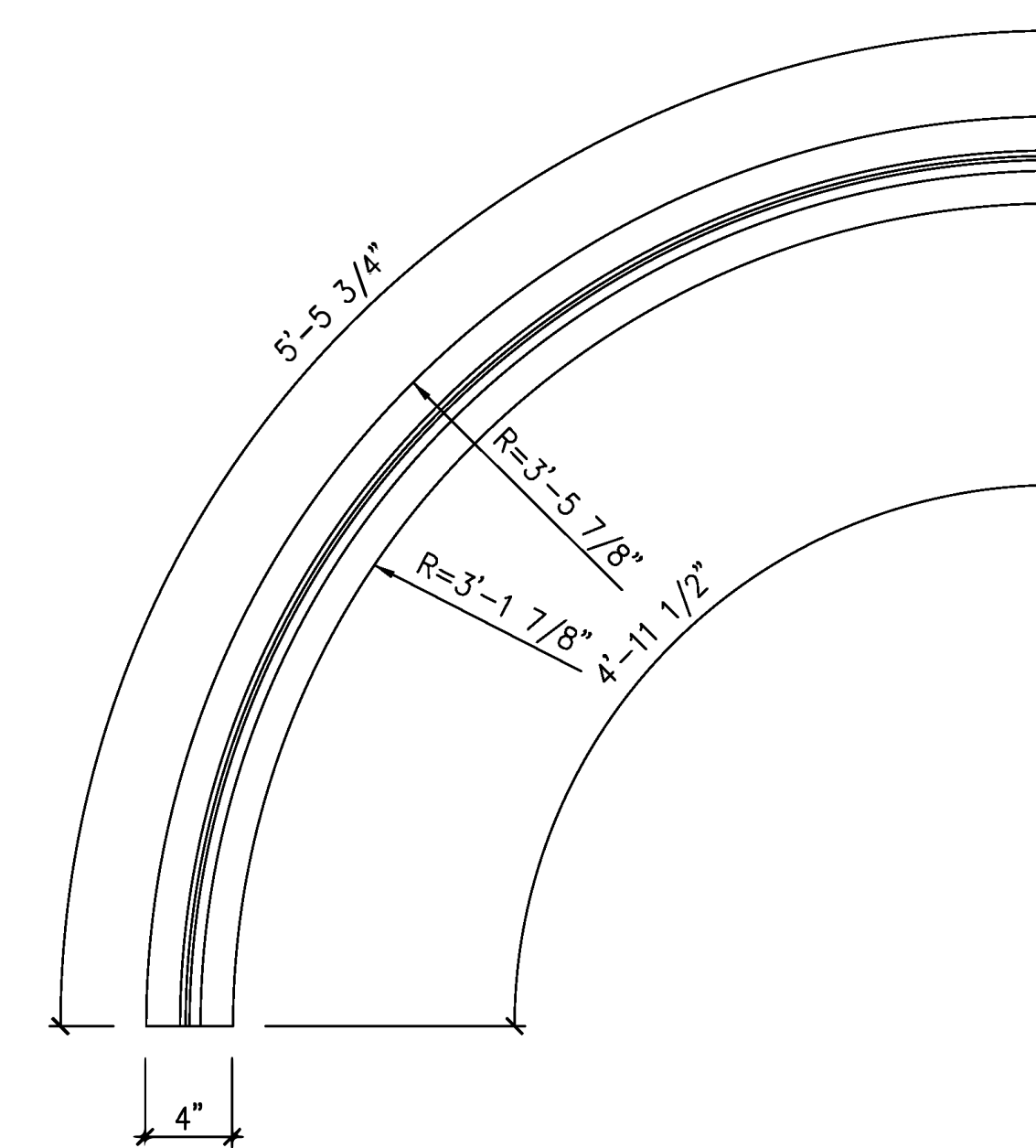
A



8 REFLECTIVE PLAN VIEW 07 / P6
SCALE: 3"=1'-0"



7 REFLECTIVE PLAN VIEW 06 / P6
SCALE: 3"=1'-0"



6 REFLECTIVE PLAN VIEW 05 / P6
SCALE: 3"=1'-0"

REQ'D : (102) 01 / P6

(12) 02 / P6

(16) 03 / P6

(4) 04 / P6

GFRG MOLDING
2 3/4" H x 4" D
8'-0" STRAIGHT LENGTH

GFRG MOLDING-INSIDE RADIUS
2 3/4" H x 4" D
3'-6 3/4" ARC LENGTH

GFRG MOLDING-INSIDE RADIUS
2 3/4" H x 4" D
3'-7 1/2" ARC LENGTH

GFRG MOLDING-INSIDE RADIUS
2 3/4" H x 4" D
5'-6" ARC LENGTH

(16) 05 / P6 GFRG MOLDING-OUTSIDE RADIUS
2 3/4" H x 4" D
5'-5 3/4" ARC LENGTH

(12) 06 / P6 GFRG MOLDING-OUTSIDE RADIUS
2 3/4" H x 4" D
5'-2 1/8" ARC LENGTH

(4) 07 / P6 GFRG MOLDING-OUTSIDE RADIUS
2 3/4" H x 4" D
6'-11 3/8" ARC LENGTH

TOTAL : (166)

GFRG CUSTOM CROWN MOULDING - TYPE 'D'

AS SHOWN

1