

NICHES



FIRST CLASS
BUILDING PRODUCTS, INC.





NICHES

NOTICE :

PL PREMIUM ADHESIVE MUST BE USED ON ALL BEDDING/BUTT JOINTS.

FCBP RESERVES THE RIGHT TO HOLLOW OUT THE BACK OF ANY PRODUCT WITHOUT NOTICE. SOME PRODUCTS MAY BE MADE AS ASSEMBLIES.



SMN 2500S
Stained Finish
WOOD GRAIN
Surface Mount



SMN 2501S
c/w Mirror
Stained Finish
WOOD GRAIN
Surface Mount



SMN 2502FW
Open Body
Flat White Finish
WOOD GRAIN
Surface Mount

SMN 2500FW
Flat White Finish
WOOD GRAIN
Surface Mount



SMN 2501FW
c/w Mirror
Flat White Finish
WOOD GRAIN
Surface Mount



SMN 2502S
Open Body
Stained Finish
WOOD GRAIN
Surface Mount



SURFACE MOUNT NICHES

Artfully Designed Accessories with Unlimited Possibilities . . .

Explore the exciting decorating options offered by these exceptional architectural accents by FCBP Moulders.

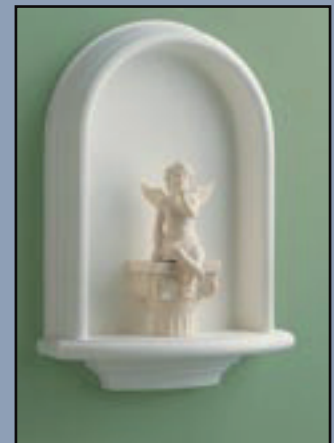
These niches are available in a variety of sizes and finishes to suit any decor. Their uses are practically limitless:

- In the living room for displaying priceless family photos currently stored away
- In the kids' room for the trophies and awards they worked so hard to earn
- In the bathroom for colourful towels, soaps, or baskets of potpourri
- Each niche is installed in only minutes using simple hand tools found in most homes

EASY TO INSTALL!



SMN 2503
Flat White Finish
Surface Mount



SURFACE MOUNT NICHES

	SMN 2500	SMN 2501	SMN 2502	SMN 2503
Height	40 1/2"	21"	21"	21"
Width	23 1/2"	14"	14"	14"
Shelf Width	24 3/4"	15"	15"	15"
Casing Projection	4"	3"	3"	3"
Shelf Projection	11"	6"	6"	6"
Body Depth	3"	2 1/2"	2 1/2"	2 1/2"
Wall Recess	—	—	—	—
Rough Opening	—	—	—	—

1.770.514.8141





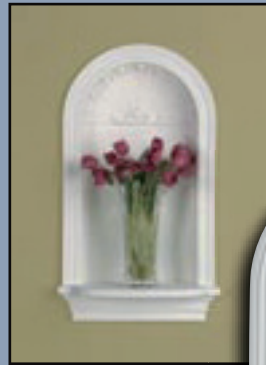
WN 2550SH
Flat White Finish
Recessed Mount



WN 2550
Flat White Finish
Recessed Mount



WN 2551*
Flat White Finish • Recessed Mount
* Translucent shelf for up lighting
(light and hardware not included.)



WN 2552SH
Flat White Finish
Recessed Mount



WN 2552
Flat White Finish
Recessed Mount

RECESSED NICHES



WN 2553
Flat White Finish
Recessed Mount



WN 2554SH
Flat White Finish
Recessed Mount



WN 2555SH
Flat White Finish
Recessed Mount



WN 2556
Flat White Finish
Recessed Mount



WN 2557SH
Flat White Finish
Recessed Mount with light

RECESSED NICHES

	WN 2550	WN 2551	WN 2552	WN 2553	WN 2554	WN 2555	WN2556	WN2557
Height	40 1/2"	27 1/2"	32 1/4"	59 3/8"	64 1/2"	64 1/2"	39 3/8"	55 3/4"
Width	17 3/4"	15 1/2"	18"	36 1/2"	33 1/4"	29"	19 3/4"	28 1/4"
Shelf Width	18 3/4"	17"	19"	37 1/2"	34"	29 5/8"	21"	29 3/4"
Casing Projection	1"	1 5/8"	1/2"	1"	1"	1"	1"	1"
Shelf Projection	6 3/8"	3 1/2"	4 1/2"	2 3/4"	6"	8 1/2"	1 1/2"	3"
Body Depth	3 5/8"	3 1/4"	3"	10"	3"	4 1/8"	7 3/4"	9"
Shelf Depth	10"	6 3/4"	7 1/2"	11 3/4"	10"	11 1/4"	9 1/4"	12"
Wall Recess	3 5/8"	3 3/8"	3 1/2"	2 3/4"	4"	3 5/8"	8 1/2"	10"
Rough Opening	15" x 34"	12 1/2" x 23 3/4"	14 3/4" x 27 1/2"	28" x 56"	26 1/4" x 57"	24 1/4" x 55 1/2"	15 3/8" x 36 1/2"	24" x 53"



TEXTURES



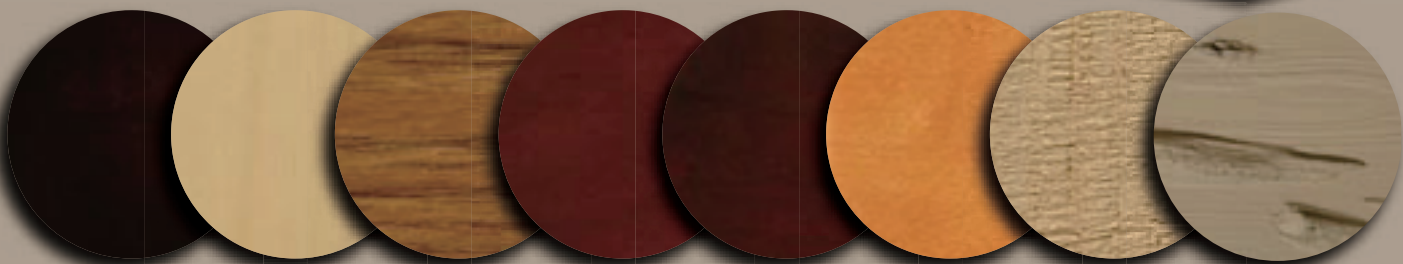
CUSTOM FINISHING

Our finishing department can colour match, prepare, and paint all of our catalogue items, in house! We have partnered with the Sherwin Williams line of finishing products to offer a rainbow of colours for both interior and exterior applications.

In addition to solid colours, we can also produce faux finishes of granite, limestone, rough sawn lumber, hewn beams, stucco, and countless others. If you have a project, which requires pre-finishing, contact your FCBP Customer Service Representative for more information and pricing.



Photo above illustrates the following products: blocks BL 2470 & BL 2471, baluster BAL 2041-29FS, and rail RAL 2108T-FS top fossil stone texture.



COLOUR OPTIONS

FCBP offers a rainbow of colors for both interior and exterior applications.

1.770.514.8141





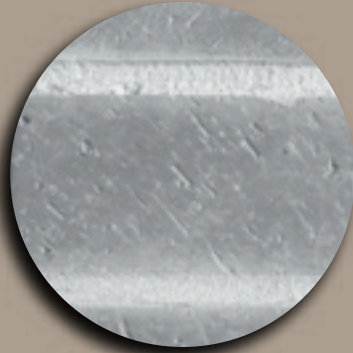
FOSSIL STONE - FS



CONCRETE FINISH - CF



STUCCO STONE - SS



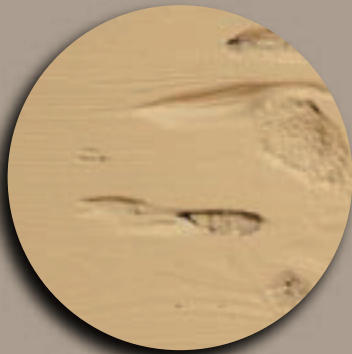
BRICK TEXTURE - BT



ROUGH SAWN - RS



WOOD GRAIN - WG



PECKY CYPRESS - PC

FOSSIL STONE

- BAL 2012-25FS
- BAL 2027-22EXT20FS
- BAL2027-29EXT32FS
- BAL 2031-25FS
- BAL 2031-28FS
- BAL 2031-30FS
- BAL 2032-31FS
- BAL 2041-29FS
- BAL 2046-25FS
- BAL 2075-25FS
- BL 2447FS
- BL 2470FS
- BL 2471FS
- CB 100-160FS
- CB 100-161FS
- CB 100-162FS
- CB 100-163FS
- CLM110-104FS
- CLM 110-105FS
- CLM 110-106FS
- CLM 300-100FS
- NC 2309FS
- NC 2315FS
- NC 2316FS
- NC 2334FS
- NC 2337FS
- NC 2349FS
- NC 2353FS
- NP 2208FS
- NP 2209FS
- NP 2211FS
- MD 1011FS-6
- MD 1161FS
- MD 1172FS
- MD1223FS
- MD 1284FS
- MD 1533FS
- MD 1621FS
- MD 1622FS
- RAL 2100T-FS
- RAL 2100B-FS
- RAL 2101T-FS
- RAL 2101B-FS
- RAL 2108T-FS

CONCRETE FINISH

- BAL 2027-26CF
- BL 2816CF
- BL 2817CF
- CB 400-103CF
- CB 400-104CF
- CR 107CF
- CR 108CF
- MD 1034CF
- MD 1442CF
- MD 1443CF
- MD 1642CF
- MD 1643CF
- MD 1644CF
- MD 1645CF
- MD 1647CF
- MD 1650CF
- MD 1651CF
- MD 1776CF
- MD 1777CF
- MD 1778CF
- NC 2349CF
- NP 2208CF
- RAL 2100T-CF
- RAL 2100B-CF

ROUGH SAWN

- BL 2720RS
- BL 2770RS
- BL 2771RS
- BL 2814RS
- BL 2815RS
- BL 2820RS
- MD 1011-6RS
- MD 1011-8RS
- MD 1108-6RS
- MD 1108-8RS
- MD 1114-6RS
- MD 1114-8RS
- MD 1509RS
- MD 1582RS

WOOD GRAIN

- BL 2680WG
- MD 1201WG
- MD 1380WG
- MD 1536WG
- MD 1689WG
- MR 3255WG
- SMN 2500S-WG
- SMN 2500FW-WG
- SMN 2501S-WG
- SMN 2501FW-WG
- SMN 2502S-WG
- SMN 2502FW-WG

STUCCO STONE

- BAL 2054-24SS
- RAL 2113T-SS
- RAL 2113B-SS

BRICK TEXTURE

- BF 200BT

PECKY

CYPRESS

- BL 2642PC
- BL 2889PC
- BL 2897PC
- BL 2898PC
- BL 2899PC



Bridge railing made with baluster BAL 2031FS, rail RAL 2100T-FS & B & newel post NP 2211FS.

BEFORE

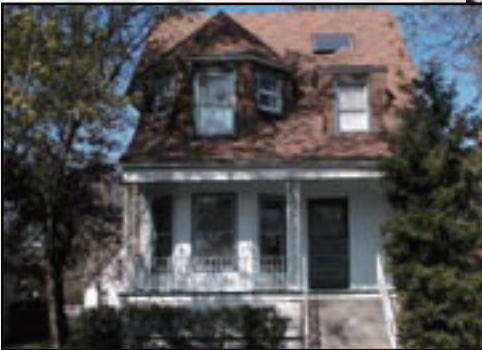


A custom entrance, medallion CM 4671 and finial FIN 32 were added to this building to complete its transformation.



AFTER

BEFORE



Added to the exterior of this house were products porch posts PP 3200, balusters BAL 2019-20, BAL 2028-9, rails RAL 2104T & B and newel posts NP 2206

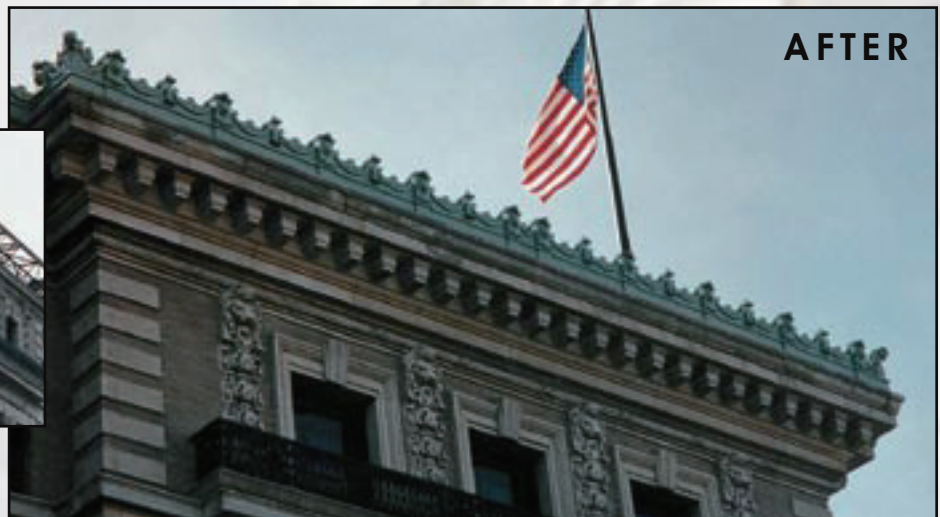


AFTER

BEFORE



This heritage building gets a completed restoration with custom cresting.



AFTER

1.770.514.8141



FIRST CLASS

BUILDING PRODUCTS, INC.

Custom Polyurethane Products

MASONIC TEMPLE

Portsmouth,
New Hampshire,
U.S.A.



BEFORE



AFTER

BEFORE



AFTER

www.firstclassbp.com

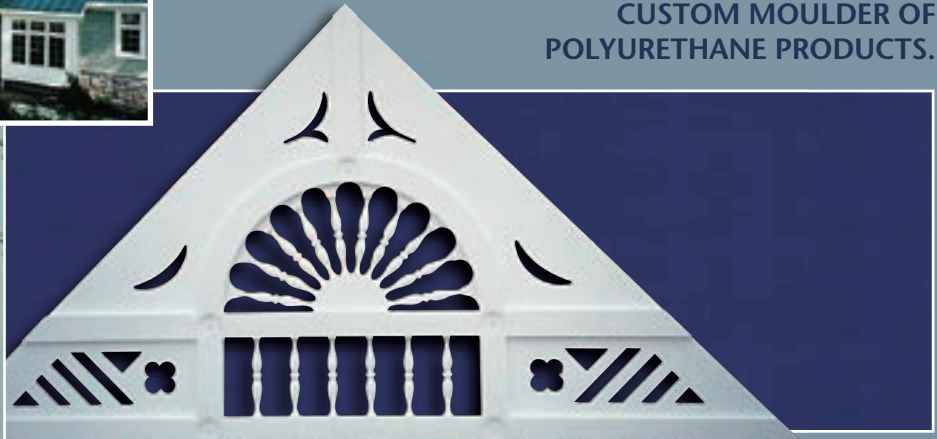




CUSTOM PRODUCTS



Not only does FCBP have a wide variety of stock products, but we are also a **CUSTOM MOULDER OF POLYURETHANE PRODUCTS.**



Gable End Decoration
• 124 1/4" wide x 77 3/4" height

Gingerbread Accents



This church steeple was manufactured using polyurethane and PVC board over an aluminum truss structure.



Moulding with brackets, pre-finished in the factory



Panel Cresting on Casino
• 51 1/2" Height • 68" Length of Panels

1 • 770 • 514 • 8141





Columns
• 5' x 5' x 24'

Large Golf Ball
• 11 7/8" Diameter



Interior or exterior, small or large, clean and simple or full of complexity, send us something to talk about.

The possibilities are literally endless . . .



**Balusters, Railings,
Newel Posts &
Columns**

Utilizing our quoting department, FCBP can provide pricing, shop drawings and specifications for approval prior to turning your custom design over to FCBP Master Pattern Shop.



72 1/2" Custom Medallion with Venting made for Casino



26' Tall Exterior Pilasters

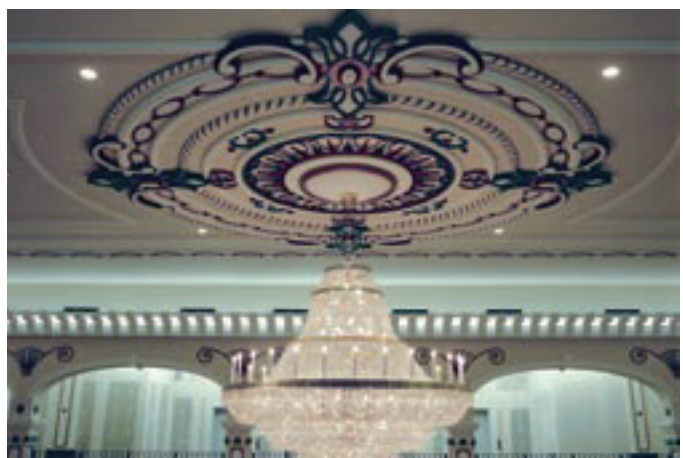
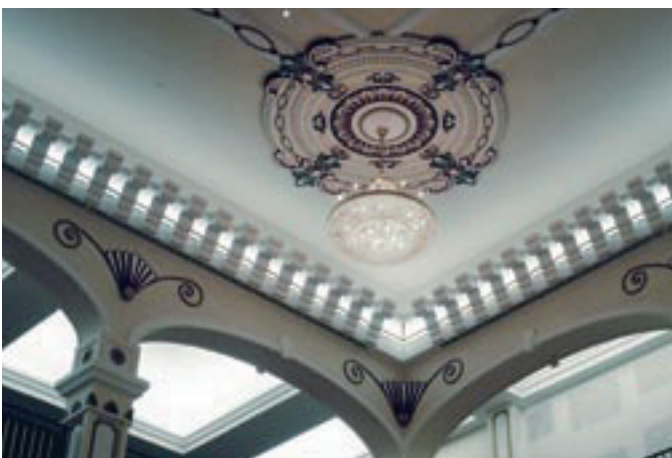


Decorative Window Treatment

SPECTIS GFRG, GFRC AND POLYURETHANE PRODUCTS

(GFRG-Glass Fibre Reinforced Gypsum / GFRC-Glass Fibre Reinforced Concrete)

FirstClassBP manufactures architectural detailing from high density polyurethane, GFRG, and GFRC. Whether major restoration or new construction, with these materials it is possible to create timeless beauty of the past and present, for individual homes, offices and custom projects. Having supplied materials for construction sites such as Yale University, Disney World in Orlando, Wisconsin Electric Building in Milwaukee, Caesar's Casinos, and McPhillips Street Station Casino in Winnipeg, we can assure you we will provide all your architectural detailing needs. For more information, please contact our Customer Service Representative.



Some examples of GFRG mouldings, medallions, brackets & decorative accents located in McPhillips Street Station Casino, Winnipeg, Manitoba, Canada. Center right medallion is 26 feet in diameter.

1.770.514.8141

